

PURCEE INDUSTRIAL POWER & CONTROLS

www.purceeindustrial.africa



2025 Edition Product Catalogue

Leading the civil, electrical, mechanical, and manufacturing industry



Civil



Electrical



Mechanical



Manufacturing





Content



About Us	2-3
-----------------	-----



Our Services	3
---------------------	---



Electrical Panels	4
--------------------------	---



Tool Bag	5-6
-----------------	-----



Transformers	7
---------------------	---



Lifting Equipment	8-15
--------------------------	------



Pipe Fittings	16-32
----------------------	-------



Pumps	33
--------------	----



Electrical Components	34-43
------------------------------	-------



Lighting	44-46
-----------------	-------



Cables	47-49
---------------	-------



Cable Racking	50
----------------------	----



Cable Accessories	51-54
--------------------------	-------



Instrumentation	55-56
------------------------	-------



Fastener Range	57-60
-----------------------	-------



Tools	61-71
--------------	-------



Valves	72-74
---------------	-------



UPS Systems	75
--------------------	----



PPE	76
------------	----



Managing Direction	79
---------------------------	----



Introducing Purcee Industrial Power & Controls

With over 50 years of experience in the mining sector, Purcee Industrial Power & Controls stands out as the premier civil, electrical and mechanical engineering firm as well as manufacturer of industrial equipment for the mining industry in Africa.

With our two branches in the DRC, we offer excellent geographical accessibility with a robust global supply chain. We offer unparalleled value to your mining operations with an exceptional track record, and extensive expertise.

Our commitment to quality is evident through our range of cutting-edge equipment and services, tailored specifically for the unique needs of the mining sector. By providing reliable and durable solutions, Purcee Industrial Power & Controls ensures uninterrupted operations, optimizing productivity and safety.

Moreover, our exceptional multilingual customer service and prompt support make us a trusted partner for mining companies in the DRC, solidifying our position as the top choice.



Our Products

Our product range includes equipment that fulfil common, daily needs to highly specialized, project-critical solutions, for example:

- ⚡ Electrical Panels and Transformers
- ⚡ Electrical Accessories
- ⚡ Lifting Equipment
- ⚡ Light Fittings and Instrumentation
- ⚡ Electrical & Mechanical Tools
- ⚡ Pumps and Cables
- ⚡ Valves



Our Services

Our highly trained in-house electrical and mechanical engineers specialize in maintenance, repair, and installations.

- ⚡ Electrical Panel Repair and Refurbishment
- ⚡ Commissioning of New Sub Stations
- ⚡ Engineering Solutions
- ⚡ Boiler Making
- ⚡ Electrical Panel Design and Assembly
- ⚡ Conveyor Belt Installations and Maintenance
- ⚡ Lamp Room Repairs



Our Solution

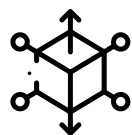
To address these challenges, mining companies need to implement rigorous due diligence processes to select reliable suppliers and ensure continuously efficient operational states and compliance with ethical and environmental standards.



Supply & Distribution

We offer comprehensive supply chain solutions and are able to distribute high-quality equipment for the mining and industrial sector. We ensure our clients receive reliable and durable products that enhance operational productivity and safety.

- ⚡ Transformers
- ⚡ Lifting Equipment
- ⚡ Electrical Cables
- ⚡ Conveyor Belts
- ⚡ Pipes
- ⚡ Valves
- ⚡ Electrical Panels
- ⚡ Electrical Accessories
- ⚡ Pumps



Unrelenting Scalability and Leading Supplier Brands

We have successfully completed more than 359 projects and fulfilled over 15000 orders, which include over 850 000 different products, ranging from cables, electrical panels, instrumentation, valves, pipe fittings, and more.

Our qualified and experienced electricians, mechanical designers, boilermakers and artisans rise to any technical challenge and implement long-term, sustainable solutions.





Construction

We specialize in delivering high-quality construction and installation services, tailored to the industrial construction sector. With a focus on innovation and efficiency, this division provides comprehensive solutions, including design, installation, and maintenance.



Manufacturing Plant Construction: Design and construction of state-of-the-art manufacturing facilities.



Warehouse and Distribution Centers: Building large-scale warehouses and logistics facilities.



Heavy Industrial Facilities: Constructing factories and industrial complexes.



Project Management: Comprehensive management from planning through to project completion.



Manufacturing

Our manufacturing division encompasses the design, production, and supply of high-quality electrical, mechanical, and industrial equipment tailored specifically for the mining and industrial sectors.



Electrical Tool Bag



Electrical Panels



Mechanical Tool Trolley



Electrical Screwdrivers



Electrical and Mechanical Tool Kits

We source and supply over 5000 quality products from only the most reputable global manufacturing partners such as:



HellermannTyton

The Ultimate Tool Bag

Check out our NEW tool bag on page 5!



Panel Manufacturers in The DRC and RSA.



Our electrical panels are engineered for high performance, efficiency, and reliability in the mining industry, even in the toughest environments. Every component is carefully chosen for durability and function, making them ideal for heavy-duty use. Built to endure harsh conditions, the panels provide strong protection and seamless integration—boosting efficiency, reducing downtime, and improving safety. Their advanced design requires minimal maintenance, keeping operations smooth and cost-effective.

Manufactured in South Africa and the DRC, our panels showcase local expertise and a strong commitment to quality. Using regional resources and skilled labour, we meet global standards while addressing local industry needs—supporting economic growth and sustainability.

Panels



Description

Distribute and regulate power. Circuit breakers, relays, and meters are components used to ensure that the electrical system runs smoothly and efficiently. They are critical to maintaining safe and reliable energy distribution.

Code Product Details

P000008	5KVA LIGHTING TRANSFORMER 1000V
P000036	2.5KVA Lighting Transformer Gulley Box 1000V
P000040	10-37KW Pump Starter Gulley Box
P000082	Purcee New Era: 250kW DOL Starter 1000V - No UMC
P000083	Purcee New Era: 315kW DOL Starter 1000V - No UMC
P000084	Purcee New Era: 37-90kW DOL Pump Starter 1000V - No UMC
P000085	Purcee New Era: Dual Jumbo 150kW/8-30kW Starter 1000V - No UMC
P000086	Purcee New Era 132KW Pulse Fan Starter 1000V - No UMC
P000087	Purcee New Era 110KW Pulse Fan Starter 1000V - No UMC
P000088	Purcee New Era 75KW Fan Starter 1000V - No UMC
P000089	Purcee New Era 45KW Fan Starter 1000V - No UMC
P000091	Purcee New Era: 8-30kW DOL Pump Starter 1000V - No UMC
P000092	Purcee New Era: 160A Electrical Feeder Gulley Box 1000V
P000093	Purcee New Era: 60A Electrical Feeder Gulley Box 1000V
P000094	Purcee New Era: 80A Electrical Feeder Gulley Box 1000V
P000095	Purcee New Era: 250A Incomer Gulley Box 1000V
P000096	Purcee New Era: 350A Incomer Gulley Box 1000V
P000097	Purcee New Era: 250A Outgoer Gulley Box 1000V
P000098	Purcee New Era: 350A Outgoer Gulley Box 1000V
P000099	Purcee New Era: 5KVA Lighting Transformer 1000V
P000100	Purcee New Era: Gulley Box Stand
P000101	Purcee New Era: 315kW Dual Starter Soft Starter 1000V
P000104	Purcee New Era: 10-45KW DOL Pump Starter 1000V
P000105	Purcee New Era: 90KW Pulse Fan Starter 1000V
P000152	Purcee New Era 160KW DOL Pump Starter 525V - No UMC
P000153	Purcee New Era 250KW Star-Delta Pump Starter 525V - No UMC
P000156	Purcee New Era: 200A Electrical Feeder Gulley
P000157	Purcee New Era: 63A Electrical Feeder Gulley
P000158	Purcee New Era: 400A Electrical Feeder Gulley
P000159	Purcee New Era: 37KW DOL Starter 525V
P000160	Purcee New Era: 90KW DOL Starter 525V
P000165	Purcee New Era: Pump Train 132kW Sequential Soft-Starter 525V
P000166	Purcee New Era: Siemens S7 PLC 20v Instrumentation Panel 220VAC
P000168	Purcee New Era: 150kW DOL Pump Starter 1000V - No UMC
P000169	Purcee New Era: 200kW DOL Pump Starter 1000V - No UMC
P000037	150KW Jumbo Starter Gulley Box 1000V
P000038	75-110KW Fan Starter Gulley Box 1000V
P000039	90KW Pump Starter Gulley Box 1000V







Tool Bag



The NEW Purcee Tool Bag



Description

Welcome to the ultimate solution for industrial professionals The Purcee Tool Bag. Crafted with precision and durability in mind, this tool bag is designed to meet the rigorous demands of mining and industrial settings, offering convenience, organization, and reliability. Whether you're a technician, electrician, engineer, or general contractor. The Purcee Tool Bag serves as your trusted companion, ensuring that you have easy access to your tools while on the job. With its robust construction, ergonomic design, and special set of tools, The Purcee Tool Bag is engineered to enhance efficiency and productivity in any work environment. Say goodbye to cluttered toolboxes and hello to effortless organization with The Purcee Tool Bag.

Code

G000706

Product Details

6" Pro Long Nose Plier
8" Adjustable Wrench
8" Pro Diagonal Cutting Plier
18mm Folding Knife
7Pcs Insulated Screwdrivers Set
Steel Universal Panel Key
5mX25mm Metric Measuring Tape
10" Oval Jaw Lock-Grip Plier
450g/1lb Ball Pein Hammer with fiberglass Handle
10"/12" Adjustable Hacksaw Frame
9Pcs Extra Long Hex Key Wrench
9Pcs Extra Long Torx Key Wrench
12" D4 Groove Joint Plier
215mm Ratchet Crimping Plier
8, 10 and 13 X125mm Nut Socket Screwdriver Insulated 1000V Set of 3
Rechargeable Hed Light
9.5" Heavy Duty Cable Cutter
205mm Automatic Wire Stripper
8, 10 and 13mm Fixed Ratchet Combination Wrench
Electrical rubber gloves
765mm Ear Plug
140mm Safety Goggle
90-1000V Non-Contact Detector
5.5" Wire Stripper
Hex Ratchet Crimping Plier

Tool Bag Type	Size (pieces)	Dimensions (cm)	Color
Mechanical / Technical / Electrical	36	48 x 40 x 23	Green, White, Black

Disclaimer: Actual sizes, pressure ratings, dimensions, and weights may vary depending on specific models and project requirements.



Transformers



Mini-Substation



Description

Step up and step-down voltage levels to suit the demands of various machinery, equipment, and lighting systems in mines or other sites. To provide effective power distribution, reduce energy losses, and maintain a steady supply of electricity.

Code

Product Details

T000001	Cast Resin Dry Type 5mm Miniature Substation 2000KVA 11000-1000V
T000002	Distribution Transformer: 150KVA 1000-400V Dyn11
T000003	Distribution Transformer: 150KVA 1000-550V Dyn11
T000004	Distribution Transformer: 2500KVA 11000-690V
T000005	Cast Resin Dry Type Transformer 2500KVA 11000-690V
T000006	Cast Resin Dry Type Transformer 1300KVA 11000 1000V-400V
T000007	Pole Mounted Transformer 100KVA 11KV-400V
T000008	Oil Filled Voltage Transformer 11KV
T000009	Oil Filled Voltage Transformer 33KV
T000010	Cast Resin Dry Type 5mm Miniature 1000KVA 11000-1000V

Low voltage transformers



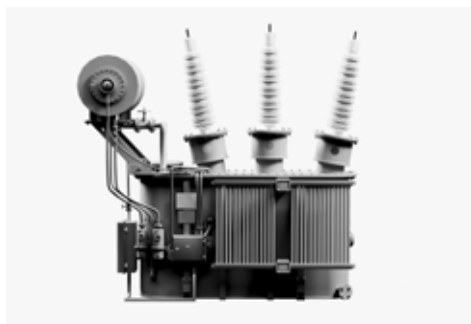
Description

Controls and converts electrical energy into low voltage levels suitable for a variety of applications. Ensuring consistent and secure functioning. Increases the productivity and safety of operations by decreasing energy losses and ensuring efficient electrical distribution.

Code

Product Details

T000011	Transformer 50VA C11/200VA C13P 11000/110/110/V3
T000012	Transformer 500VA 1/PH 550V-1000V/110V-220V
T000013	Transformer 250VA 1/PH 550V-1000V/110V
T000014	Transformer 50VA Open Delta 1000V/400V
T000015	Transformer 5KVA 3/PH 550V-1000V/220V 1/PH





Lifting Equipment



Non-Adjustable Chain Slings



Description

Set in length and cannot be modified. Offers dependable lifting solutions for certain load sizes and shapes, guaranteeing stability and safety during material handling activities.

Code

Product Details

L000027	4Leg Non Adj. Chain Sling x 6m x 5Ton SWL
L000028	2Leg Non Adj. Chain Sling x 6m x 5Ton SWL
L000029	4Leg Non Adj. Chain Sling x 6m x 12Ton SWL
L000030	4Leg Non Adj. Chain Sling x 12m x 44Ton SWL

Size (Diameter)	Capacity (Vertical)	Capacity (Choker)	Capacity (Basket)	Standard Length	Color
1" (25mm)	1 ton	0.8 ton	2 tons	3m, 4m, 6m	Purple
2" (50mm)	2 tons	1.6 tons	4 tons	3m, 4m, 6m	Green
3" (75mm)	3 tons	2.4 tons	6 tons	3m, 4m, 6m	Yellow
4" (100mm)	4 tons	3.2 tons	8 tons	3m, 4m, 6m	Grey
5" (125mm)	5 tons	4 tons	10 tons	3m, 4m, 6m	Red
6" (150mm)	6 tons	4.8 tons	12 tons	3m, 4m, 6m	Blue
8" (200mm)	8 tons	6.4 tons	16 tons	3m, 4m, 6m	Orange
10" (250mm)	10 tons	8 tons	20 tons	3m, 4m, 6m	White
12" (300mm)	12 tons	9.6 tons	24 tons	3m, 4m, 6m	Brown

Disclaimer: Actual sizes, pressure ratings, dimensions, and weights may vary depending on specific models and project requirements.

Adjustable Chain Slings



Description

Changeable length features that let users alter the sling's structure to meet different lifting needs. An essential equipment due to their adaptability to various load sizes, forms, and lifting angles.

Code

Product Details

L000115	2Leg x 3m x 5Ton Adj. Chain Sling c/w Safety Sling Hooks
L000116	2Leg x 2m x 5Ton Adj. Chain Sling c/w Safety Sling Hooks
L000117	2Leg x 3m x 3Ton Adj. Chain Sling c/w Safety Sling Hooks
L000118	2Leg x 2m x 3Ton Adj. Chain Sling c/w Safety Sling Hooks
L000119	2Leg x 3m x 2Ton Adj. Chain Sling c/w Safety Sling Hooks
L000120	2Leg x 1m x 1Ton Adj. Chain Sling c/w Safety Sling Hooks
L000121	2Leg x 2m x 1Ton Adj. Chain Sling c/w Safety Sling Hooks

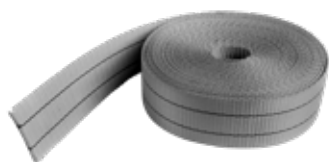
Size (Chain Diameter)	Capacity (Vertical)	Capacity (Choker)	Capacity (Basket)	Length (Single Leg)	Length (Double Leg)	Length (Triple Leg)
7mm	1 ton	0.8 ton	2 tons	1m - 6m	1m - 6m	1m - 6m
8mm	2 tons	1.6 tons	4 tons	1m - 6m	1m - 6m	1m - 6m
10mm	3.15 tons	2.5 tons	6.3 tons	1m - 6m	1m - 6m	1m - 6m
13mm	5.3 tons	4.2 tons	10.6 tons	1m - 6m	1m - 6m	1m - 6m
16mm	8 tons	6.4 tons	16 tons	1m - 6m	1m - 6m	1m - 6m
20mm	12.5 tons	10 tons	25 tons	1m - 6m	1m - 6m	1m - 6m
22mm	15 tons	12 tons	30 tons	1m - 6m	1m - 6m	1m - 6m
26mm	21.2 tons	16.8 tons	42.4 tons	1m - 6m	1m - 6m	1m - 6m
32mm	31.5 tons	25.2 tons	63 tons	1m - 6m	1m - 6m	1m - 6m

Disclaimer: Actual sizes, pressure ratings, dimensions, and weights may vary depending on specific models and project requirements.



Lifting Equipment

Safety Slings



Description

Secures and supports loads during lifting, rigging, and material handling operations while prioritizing worker safety. Made from durable materials such as nylon, polyester, or wire rope, are engineered to withstand heavy loads and harsh environmental conditions.

Code

Product Details

L000062	10mm Grade 80 Safety Sling Hook (SWL 3,2Ton)
L000063	13mm Grade 80 Safety Sling Hook (SWL 5,4Ton)

Size (Diameter)	Capacity (Vertical)	Capacity (Choker)	Capacity (Basket)	Standard Length
1" (25mm)	1 ton	0.8 ton	2 tons	3m, 4m, 6m
2" (50mm)	2 tons	1.6 tons	4 tons	3m, 4m, 6m
3" (75mm)	3 tons	2.4 tons	6 tons	3m, 4m, 6m
4" (100mm)	4 tons	3.2 tons	8 tons	3m, 4m, 6m
5" (125mm)	5 tons	4 tons	10 tons	3m, 4m, 6m
6" (150mm)	6 tons	4.8 tons	12 tons	3m, 4m, 6m
8" (200mm)	8 tons	6.4 tons	16 tons	3m, 4m, 6m
10" (250mm)	10 tons	8 tons	20 tons	3m, 4m, 6m
12" (300mm)	12 tons	9.6 tons	24 tons	3m, 4m, 6m

Disclaimer: Actual sizes, pressure ratings, dimensions, and weights may vary depending on specific models and project requirements.

KITO Chain Block - Safety Latch



Description

Specialized lifting device widely employed for hoisting heavy loads safely. Features a sturdy construction and incorporates a mechanism to prevent accidental disengagement of the load.

Code

Product Details

L000075	1Ton Kito Chain Block Safety Latch
L000074	1,5Ton Kito Chain Block Safety Latch
L000078	1,6Ton Kito Lever Hoist Safety Latch
L000073	2Ton Kito Chain Block Safety Latch
L000072	3Ton Kito Chain Block Safety Latch
L000077	3,2Ton Kito Lever Hoist Safety Latch
L000071	5Ton Kito Chain Block Safety Latch
L000076	6,3Ton Kito Lever Hoist Safety Latch
L000079	0,8Ton Kito Lever Hoist Safety Latch

Size (Capacity)	Capacity (Metric Tons)	Capacity (Imperial Tons)	Chain Diameter (mm)	Standard Lift Height (mm)	Net Weight (kg)
0.5	0.5	0.55	6.3mm	2.5m	9 kg
1	1	1.1	6.3mm	2.5m	9.4 kg
1.5	1.5	1.65	7.1mm	2.5m	12 kg
2	2	2.2	7.1mm	2.5m	13.5kg
3	3	3.3	9.0mm	3m	22 kg
5	5	5.5	9.0mm	3m	26 kg
10	10	11.0	9.0mm	3m	46 kg
20	20	22.0	9.0mm	3m	90 kg

Disclaimer: Actual sizes, pressure ratings, dimensions, and weights may vary depending on specific models and project requirements.



Lifting Equipment

Screw Pin Bow Shackles



Description

Secures heavy loads. Featuring a bow-shaped design, these shackles are equipped with a removable pin secured by a screw mechanism, allowing for easy attachment and removal of loads. Screw pin bow shackles provide a reliable and secure connection point.

Code

Product Details

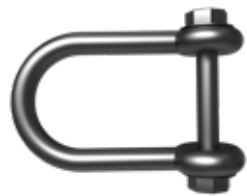
L000048	0,5Ton Screw Pin Bow Shackle 8mm Pin Grade 6
L000047	0,75Ton Screw Pin Bow Shackle 10mm Pin
L000026	3,25Ton Screw Pin Bow Shackle
L000050	4,75Ton Screw Pin Bow Shackle
L000031	6,5Ton Screw Pin Bow Shackle
L000044	17Ton Screw Pin Bow Shackle

Size (Pin Diameter)	Working Load Limit (tons)	Dimensions (mm)
3/16" (4.75mm)	0.33	A: 12.7, B: 6.35, C: 22.2
1/4" (6.35mm)	0.5	A: 15.9, B: 7.95, C: 28.6
5/16" (7.94mm)	0.75	A: 19.1, B: 9.53, C: 35.1
3/8" (9.53mm)	1	A: 22.2, B: 11.1, C: 42.9
7/16" (11.1mm)	1.5	A: 25.4, B: 12.7, C: 49.3
1/2" (12.7mm)	2	A: 28.6, B: 14.3, C: 57.2
5/8" (15.88mm)	3.25	A: 36.5, B: 17.5, C: 69.9
3/4" (19.05mm)	4.75	A: 42.9, B: 21.4, C: 82.6
7/8" (22.23mm)	6.5	A: 47.8, B: 24.6, C: 95.3
1" (25.4mm)	8.5	A: 53.8, B: 28.6, C: 108

Dimensions A, B, and C represent the inside length, width, and pin diameter, respectively, in millimeters.

Disclaimer: Actual sizes, pressure ratings, dimensions, and weights may vary depending on specific models and project requirements.

Safety Bow Shackles



Description

Equipped with a safety mechanism, such as a cotter pin or bolt and nut arrangement, to prevent accidental disengagement during lifting operations.

Code

Product Details

L000105	17Ton Safety Bow Shackle
---------	--------------------------

Size (Pin Diameter)	Working Load Limit (tons)	Dimensions (mm)
1/4" (6.35mm)	0.5	A: 19.1, B: 9.53, C: 35.1
5/16" (7.94mm)	0.75	A: 22.2, B: 11.1, C: 42.9
3/8" (9.53mm)	1	A: 25.4, B: 12.7, C: 49.3
7/16" (11.1mm)	1.5	A: 28.6, B: 14.3, C: 57.2
1/2" (12.7mm)	2	A: 31.8, B: 15.9, C: 60.3
5/8" (15.88mm)	3.25	A: 38.1, B: 19.1, C: 73
3/4" (19.05mm)	4.75	A: 44.5, B: 22.2, C: 82.6
7/8" (22.23mm)	6.5	A: 50.8, B: 25.4, C: 95.3
1" (25.4mm)	8.5	A: 57.2, B: 28.6, C: 108

Dimensions A, B, and C represent the inside length, width, and pin diameter, respectively, in millimeters.

Disclaimer: Actual sizes, pressure ratings, dimensions, and weights may vary depending on specific models and project requirements.



Lifting Equipment

Safety Pin Bow Shackles



Description

Bow-shaped design, these shackles are equipped with a removable pin that is secured by a safety mechanism, such as a cotter pin or split pin, to prevent accidental disengagement during lifting operations.

Code

Product Details

L000089	12Ton Safety Pin Bow Shackle
L000090	9,5Ton Safety Pin Bow Shackle
L000091	8,5Ton Safety Pin Bow Shackle

Size (Pin Diameter)	Working Load Limit (tons)	Dimensions (mm)
1/4" (6.35mm)	0.5	A: 19.1, B: 9.53, C: 35.1
5/16" (7.94mm)	0.75	A: 22.2, B: 11.1, C: 42.9
3/8" (9.53mm)	1	A: 25.4, B: 12.7, C: 49.3
7/16" (11.1mm)	1.5	A: 28.6, B: 14.3, C: 57.2
1/2" (12.7mm)	2	A: 31.8, B: 15.9, C: 60.3
5/8" (15.88mm)	3.25	A: 38.1, B: 19.1, C: 73
3/4" (19.05mm)	4.75	A: 44.5, B: 22.2, C: 82.6
7/8" (22.23mm)	6.5	A: 50.8, B: 25.4, C: 95.3
1" (25.4mm)	8.5	A: 57.2, B: 28.6, C: 108

Dimensions A, B, and C represent the inside length, width, and pin diameter, respectively, in millimeters.

Disclaimer: Actual sizes, pressure ratings, dimensions, and weights may vary depending on specific models and project requirements.

Bolt / Nut / Split Bow Shackles



Description

Bow-shaped design with a removable pin secured by a bolt and nut arrangement or split pin mechanism, allowing for easy attachment and removal of loads. Offers robust and reliable connections.

Code

Product Details

L000081	8,5Ton Bolt/Nut/Split Pin Bow Shackle
L000039	17Ton Bolt/Nut/Split Pin Bow Shackle

Size (Pin Diameter)	Working Load Limit (tons)	Dimensions (mm)
3/16" (4.75mm)	0.33	A: 12.7, B: 6.35, C: 22.2
1/4" (6.35mm)	0.5	A: 15.9, B: 7.95, C: 28.6
5/16" (7.94mm)	0.75	A: 19.1, B: 9.53, C: 35.1
3/8" (9.53mm)	1	A: 22.2, B: 11.1, C: 42.9
7/16" (11.1mm)	1.5	A: 25.4, B: 12.7, C: 49.3
1/2" (12.7mm)	2	A: 28.6, B: 14.3, C: 57.2
5/8" (15.88mm)	3.25	A: 36.5, B: 17.5, C: 69.9
3/4" (19.05mm)	4.75	A: 42.9, B: 21.4, C: 82.6
7/8" (22.23mm)	6.5	A: 47.8, B: 24.6, C: 95.3
1" (25.4mm)	8.5	A: 53.8, B: 28.6, C: 108

Dimensions A, B, and C represent the inside length, width, and pin diameter, respectively, in millimeters.

Disclaimer: Actual sizes, pressure ratings, dimensions, and weights may vary depending on specific models and project requirements.



Lifting Equipment

Nylon Rope



Description

Strength, flexibility, and resistance to abrasion and chemicals, is ideal for lifting, rigging, securing, and towing tasks. It is commonly utilized in material handling, construction projects, equipment maintenance, built to withstand harsh conditions.

Code

Product Details

L000049

10mm Nylon Rope (10kg Roll - 100m)

Diameter (mm)	Breaking Strength (tons)	Weight per Meter (kg)	Length (m/roll)
6	0.4	0.02	220
8	0.7	0.04	220
10	1.1	0.06	220
12	1.6	0.09	220
14	2.2	0.12	220
16	2.8	0.16	220
18	3.6	0.21	220
20	4.4	0.27	220
22	5.4	0.34	220
24	6.4	0.42	220

Disclaimer: Actual sizes, pressure ratings, dimensions, and weights may vary depending on specific models and project requirements.

Galvanized Straining Wire



Description

Steel wire coated with a layer of zinc to enhance corrosion resistance, making it suitable for outdoor and harsh environments. For reinforcing structures, securing equipment, and providing support for cables and pipes.

Code

Product Details

L000033

3mm Galvanized Straining Wire - 100m Length

L000032

6mm Galvanized Straining Wire - 1000m Length

Diameter (mm)	Breaking Strength (tons)	Weight per Meter (kg)	Length (m/roll)
3	0.4	0.017	500
4	0.7	0.03	500
5	1.1	0.047	500
6	1.6	0.068	500
7	2.2	0.094	500
8	2.8	0.121	500
9	3.6	0.153	500
10	4.4	0.189	500
11	5.4	0.229	500
12	6.4	0.271	500

Disclaimer: Actual sizes, pressure ratings, dimensions, and weights may vary depending on specific models and project requirements.



Lifting Equipment

Mild Steel Black Chains



Description

Constructed from mild steel, these chains are renowned for their strength and reliability. The "black" designation refers to the untreated surface finish of the chains.

Code

Product Details

L000052	10mm Short Link Mild Steel Black Chain
L000053	10mm Long Link Mild Steel Black Chain

Diameter (mm)	Breaking Strength (tons)	Weight per Meter (kg)	Length (m/roll)
6	0.5	0.65	25
8	1	1.18	25
10	1.6	1.85	25
12	2	2.68	25
14	2.5	3.66	25
16	3.2	4.78	25
18	4	6.17	25
20	5	7.81	25
22	6	9.71	25
24	7	11.76	25

Disclaimer: Actual sizes, pressure ratings, dimensions, and weights may vary depending on specific models and project requirements.

Beam Clamps



Description

Attaches directly onto steel beams, providing a stable anchor point for lifting equipment, hoists, or rigging systems. Beam clamps are crucial for material handling, construction, and maintenance tasks where overhead lifting or rigging is required.

Code

Product Details

L000109	3Ton Beam Clamp
L000098	5Ton Beam Clamp

Size (Beam Diameter)	Working Load Limit (tons)	Dimensions (mm)
75mm	1	A: 108, B: 55, C: 70
100mm	2	A: 128, B: 65, C: 80
125mm	3	A: 148, B: 75, C: 90
150mm	4	A: 168, B: 85, C: 100
175mm	5	A: 188, B: 95, C: 110
200mm	6	A: 208, B: 105, C: 120
225mm	7	A: 228, B: 115, C: 130
250mm	8	A: 248, B: 125, C: 140
275mm	9	A: 268, B: 135, C: 150
300mm	10	A: 288, B: 145, C: 160

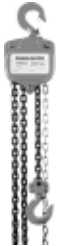
Dimensions A, B, and C represent the inside length, width, and pin diameter, respectively, in millimeters.

Disclaimer: Actual sizes, pressure ratings, dimensions, and weights may vary depending on specific models and project requirements.



Lifting Equipment

KITO Chain Block



Description

Durable chain hoist mechanism housed within a robust casing. They provide operators with efficient lifting capabilities, offering precise control over load positioning and movement, contributing to enhanced productivity and safety.

Code

Product Details

L000129	3Ton x 3m Kito Chain Block c/w OLL
L000130	2Ton x 3m Kito Chain Block c/w OLL
L000131	1Ton x 3m Kito Chain Block c/w OLL

Capacity (tons)	Chain Falls	Headroom (mm)	Load Chain Diameter (mm)	Load Chain Length (m)	Dimensions (mm)	Weight (kg)
0.5	1	240	6.3	2.5	A:146, B:130, C:268	8.5
1	1	270	6.3	2.5	A: 146, B:130, C:268	9.5
1	1	325	7.1	2.5	A:146, B:138, C:268	9.8
1	1	335	7.1	2.5	A:146, B:145, C:268	11
2	1	360	8	3	A:158, B:138, C:285	14.5
3	1	470	10	3	A:181, B:162, C:370	24
5	2	570	10	3	A:230, B:196, C:420	38.5
10	4	740	10	3	A:270, B:202, C:460	75
20	8	1000	10	3	A:410, B:330, C:560	210
30	12	1300	10	3	A:540, B:430, C:610	325

Dimensions A, B, and C represent the inside length, width, and pin diameter, respectively, in millimeters.

Disclaimer: Actual sizes, pressure ratings, dimensions, and weights may vary depending on specific models and project requirements.

Snatch Block



Description

It typically consists of a pulley enclosed within a steel housing or frame with a hook or shackle attachment point. Used when a change in direction or increased pulling capacity is required.

Code

Product Details

L000111	2Ton Snatch Block
L000110	10Ton Snatch Block

Capacity (tons)	Sheave Diameter (mm)	Max. Rope Diameter (mm)	Dimensions (mm)	Weight (kg)
1	76	10	A: 115, B: 105, C: 34	1.5
2	102	12	A: 140, B: 122, C: 42	2.8
3	127	15	A: 175, B: 152, C: 56	5.2
4	152	16	A: 200, B: 175, C: 66	7.5
5	178	18	A: 230, B: 203, C: 78	11
6	203	20	A: 260, B: 230, C: 88	15
8	254	24	A: 310, B: 270, C: 110	24
10	305	26	A: 370, B: 330, C: 130	39
12	356	28	A: 425, B: 380, C: 150	55
15	406	32	A: 490, B: 435, C: 175	82

Dimensions A, B, and C represent the inside length, width, and pin diameter, respectively, in millimeters.

Disclaimer: Actual sizes, pressure ratings, dimensions, and weights may vary depending on specific models and project requirements.



Lifting Equipment

KITO Lever Hoist



Description

Compact design and robust construction, making them ideal for various lifting applications. They offer operators precise control over lifting operations with minimal effort, contributing to increased productivity and safety.

Code

Product Details

L000127	3,2Ton x 3m Kito Lever Hoist c/w OLL
L000128	0,8Ton x 3m Kito Lever Hoist c/w OLL

Capacity (tons)	Load Chain Diameter (mm)	Standard Lift (m)	Headroom (mm)	Dimensions (mm)	Weight (kg)
0.75	6	1.5	250	A: 142, B: 127, C: 253	7.2
1.5	8	1.5	285	A: 159, B: 134, C: 282	11
3	10	1.5	340	A: 186, B: 163, C: 363	20.5
6	10	1.5	410	A: 213, B: 187, C: 412	28.5
9	10	1.5	415	A: 236, B: 207, C: 412	44.5
12	10	1.5	530	A: 266, B: 232, C: 555	57
15	10	1.5	530	A: 282, B: 232, C: 580	66
20	10	1.5	765	A: 442, B: 262, C: 865	116

Dimensions A, B, and C represent the inside length, width, and pin diameter, respectively, in millimeters.

Disclaimer: Actual sizes, pressure ratings, dimensions, and weights may vary depending on specific models and project requirements.

Lifting Equipment Accessories

Description

Shackles, hooks, slings, and spreader bars, each serving specific purposes in lifting tasks. They enable secure attachment, distribution of loads, and efficient maneuvering of materials.

Code

Product Details

L000137	16mm Drop Forged Wire Rope Clamp
L000138	Pigtail Diameter 18, 450mm Long, M20 RH Thread, 130mm Thread
L000069	5Ton x 1,5m x 13mm Grade 80 Alloy Chain
L000070	Universal Safety Latch
L000114	100mm x 12m Ratchet Strap Set

Capacity (tons)	Load Chain Diameter (mm)	Standard Lift (m)	Headroom (mm)	Dimensions (mm)	Weight (kg)
0.75	6	1.5	250	A: 142, B: 127, C: 253	7.2
1.5	8	1.5	285	A: 159, B: 134, C: 282	11
3	10	1.5	340	A: 186, B: 163, C: 363	20.5
6	10	1.5	410	A: 213, B: 187, C: 412	28.5
9	10	1.5	415	A: 236, B: 207, C: 412	44.5
12	10	1.5	530	A: 266, B: 232, C: 555	57
15	10	1.5	530	A: 282, B: 232, C: 580	66
20	10	1.5	765	A: 442, B: 262, C: 865	116

Dimensions A, B, and C represent the inside length, width, and pin diameter, respectively, in millimeters.

Disclaimer: Actual sizes, pressure ratings, dimensions, and weights may vary depending on specific models and project requirements.



Pipe Fittings



Clamps



Description

Simple hand clamps to specialized hydraulic or pneumatic clamps for heavy-duty tasks. Clamps play a crucial role in ensuring workpieces remain stable and securely positioned.

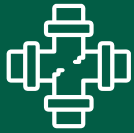
Code

Product Details

F000001	37-42mm Heavy Duty Hose Clamps
F000005	Hose Clamp 14-32mm
F000054	Hose Clamp 17-38mm
F000069	Hose Clamp 25-51mm
F000017	SafeLock 4" 114-119mm Hose Clamp
F000038	SafeLock 25mm Aluminium Hose Clamp
F000039	SafeLock 40mm Aluminium Hose Clamp
F000073	SafeLock 80mm Hose Clamp 89-93mm
F000305	Heavy Duty Clamp 40-45mm
F000051	Heavy Duty Clamp 154-168mm
F000070	Heavy Duty Hose Clamp with Lug 25mm
F000006	Crosby Clamps 13mm
F000109	Crosby Clamps 6mm
F000061	Galvanized Crosby Clamps 10mm
F000116	Multi Range S/S Repair Clamps 104 - 113mm
F000322	Cascade SS Repair Clamp 200mm 104-113mm
F000332	Clamp

Clamp Type	Capacity (tons)	Jaw Opening (mm)	Throat Depth (mm)	Weight (kg)
Beam Clamp	1	75	95	2.5
	2	100	110	5.2
	3	125	125	9.8
	5	150	145	17.5
	10	200	190	38
Girder Clamp	1	75	95	2.8
	2	100	110	5.5
	3	125	125	10
	5	150	145	18.5
	10	200	190	40
Pipe Clamp	1	20	30	0.5
	2	30	40	1.2
	3	40	50	2.5
	5	50	60	4.2
	10	60	70	8.5
Plate Clamp	1	0-20	0-30	1.5
	2	0-30	0-40	3.2
	3	0-40	0-50	5.8
	5	0-50	0-60	9.5
	10	0-60	0-70	16

Disclaimer: Actual sizes, pressure ratings, dimensions, and weights may vary depending on specific models and project requirements.



Pipe Fittings



Elbows

Description

Pipe fittings used to change the direction of piping systems. Commonly constructed from materials such as steel, stainless steel, or PVC. Enable efficient routing of fluids or gases. Allowing for proper flow management and optimal utilization of resources.

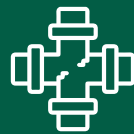
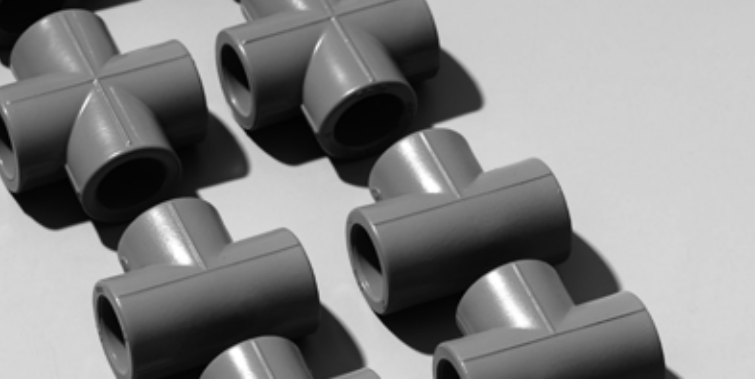
Code

Product Details

F000003	25mm Galvanized Elbow W F/F
F000139	110mm PN16 SDR11 HDPE 45 Degree Elbow (Buttweld)
F000141	160mm PN16 SDR11 HDPE 90 Degree Elbow (Buttweld)
F000140	160mm PN16 SDR11 HDPE Equal Tee (Buttweld)
F000143	Elbow 25mm

Nominal Pipe Size (NPS)	Outside Diameter (OD) (inches)	Center to End (C) (inches)	Weight (lbs)
1/2	0.84	1.50	0.05
3/4	1.05	1.50	0.10
1	1.32	1.50	0.15
1 1/4	1.66	1.88	0.30
1 1/2	1.90	2.25	0.45
2	2.38	2.50	0.80
2 1/2	2.88	3.00	1.50
3	3.50	3.50	2.50
4	4.50	4.50	5.00
5	5.56	5.56	9.00
6	6.62	6.62	14.00
8	8.62	7.00	30.00
10	10.75	8.75	60.00
12	12.75	10.00	90.00

These dimensions are based on standard ANSI B16.9 specifications.
Disclaimer: Actual sizes, pressure ratings, dimensions, and weights may vary depending on specific models and project requirements.



Pipe Fittings

Nipples



Description

Short sections of pipe with male threads at each end, commonly used for connecting two female-threaded fittings or pipes together. Made from materials like steel, stainless steel, or brass, facilitate efficient and secure connections in piping systems.

Code

Product Details

F000022	15mm Galvanized Barrel Nipple
F000078	20mm Galvanized Barrel Nipple
F000084	25mm Galvanized Barrel Nipple
F000090	32mm Galvanized Barrel Nipple
F000004	40mm Galvanized Barrel Nipple
F000093	50mm Galvanized Barrel Nipple
F000128	80mm Galvanized Barrel Nipple
F000009	80mm Stainless Steel Barrel Nipple
F000010	100mm Stainless Steel Barrel Nipple
F000117	40mm Galvanized Swage Nipple
F000040	40mm Galvanized Swage Nipple
F000131	50mm Galvanized Swage Nipple
F000018	80mm Galvanized Swage Nipple
F000041	80mm Galvanized Swage Nipple
F000052	150mm Galvanized Swage Nipple
F000060	100X50mm Swage Nipple Victaulic N54
F000032	25mm Galvanized Hexagon Barrel Nipple
F000011	25mm Galvanized Hexagon Nipple

Nominal Pipe Size (NPS)	Length (inches)	Weight (lbs/ft)
1/8	1.375	0.054
1/4	1.5	0.081
3/8	1.625	0.102
1/2	1.75	0.128
3/4	1.875	0.18
1	2	0.301
1 1/4	2.125	0.535
1 1/2	2.25	0.676
2	2.375	0.993
2 1/2	2.75	1.638
3	2.875	2.40
3 1/2	3	3.00
4	3.125	3.24
5	3.5	4.33
6	3.75	5.34
8	4.25	8.75
10	4.75	11.8
12	5.25	16.3

Disclaimer: Actual sizes, pressure ratings, dimensions, and weights may vary depending on specific models and project requirements.





Pipe Fittings

Coupling



Description

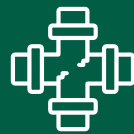
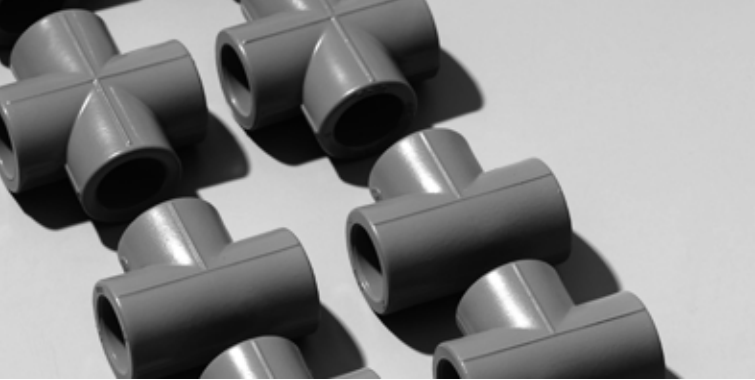
Connects two shafts together at their ends, enabling efficient power transmission between rotating components such as motors, pumps, or conveyor belts. Including rigid, flexible, and fluid couplings, each designed to accommodate different levels of misalignment, torque, and vibration.

Code

Product Details

F 0 0 0 1 1 0	Camlock Type A Aluminium 80mm
F 0 0 0 1 1 1	Camlock Type B Stainless Steel 40mm
F 0 0 0 1 1 2	Camlock Type B Stainless Steel 80mm
F 0 0 0 0 1 3	Camlock Type B Female Coupling x Hose 40mm
F 0 0 0 0 3 4	Camlock Type B Female x Male Coupling 40mm SS
F 0 0 0 0 1 2	Camlock Type C Female Coupling x Hose 80mm
F 0 0 0 0 3 3	Camlock Type C Female Coupling x Hose 80mm SS
F 0 0 0 1 2 9	Camlock Type C Female Coupling X Hose 80mm SS
F 0 0 0 0 3 5	Camlock Type D Female Coupler x Female 40mm SS
F 0 0 0 0 5 8	Camlock Type D Female Coupler X Female 80mm S/S
F 0 0 0 1 1 3	Camlock Type D Stainless Steel 80mm
F 0 0 0 0 1 5	Camlock Type E Male Adapter And Hose 40mm
F 0 0 0 1 1 4	Camlock Type E Stainless Steel 40mm
F 0 0 0 1 1 5	Camlock Type E Stainless Steel 80mm
F 0 0 0 3 1 2	Camlock Coupling TYPE A 1 1/2" SS
F 0 0 0 3 1 1	Camlock Coupling TYPE 1/2" SS
F 0 0 0 3 1 3	Camlock Coupling TYPE B 1 1/2" SS
F 0 0 0 3 1 4	Camlock Coupling TYPE B 2" SS
F 0 0 0 3 1 5	Camlock Coupling TYPE B 3" SS
F 0 0 0 3 0 9	Camlock Coupling TYPE C 1/2" SS
F 0 0 0 3 1 0	Camlock Coupling TYPE C 3" SS
F 0 0 0 3 1 6	Camlock Coupling TYPE D 3" SS
F 0 0 0 3 1 7	Camlock Coupling TYPE E 1 1/2" SS
F 0 0 0 3 1 8	Camlock Coupling TYPE E 2" SS
F 0 0 0 3 1 9	Camlock Coupling TYPE E 3" SS
F 0 0 0 3 2 0	Camlock Coupling TYPE E 4" SS
F 0 0 0 3 2 1	Camlock Coupling TYPE F 3" SS
F 0 0 0 0 5 9	80mm Galvanized Victaulic Coupling
F 0 0 0 0 7 4	Multi Range SS Repair Coupling 104-113mm
F 0 0 0 1 3 3	Coupling 110mm
F 0 0 0 1 1 8	Quick Coupler Air 1/4" Male Thread

Nominal Pipe Size (NPS)	Outside Diameter (OD) (inches)	Length (L) (inches)	Weight (lbs)
1/8	0.405	1.00	0.04
1/4	0.540	1.13	0.06
3/8	0.675	1.25	0.09
1/2	0.840	1.38	0.15
3/4	1.050	1.50	0.25
1	1.315	1.75	0.40
1 1/4	1.660	2.00	0.70
1 1/2	1.900	2.25	1.00
2	2.375	2.50	1.80
2 1/2	2.875	2.75	2.80
3	3.500	3.00	4.00
3 1/2	4.000	3.50	5.80
4	4.500	3.75	8.00
5	5.563	4.25	13.50
6	6.625	4.75	20.00
8	8.625	5.50	35.00
10	10.750	6.00	55.00
12	12.750	6.50	80.00



Pipe Fittings

Adapters



Description

Connects two different types of components, such as pipes, fittings, or tools, that would not otherwise fit together. Made from durable materials like steel, brass, or PVC, depending on the specific application and environmental conditions.

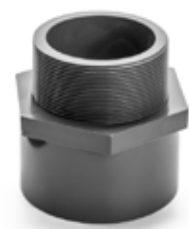
Code

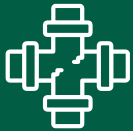
Product Details

F000015	Camlock Type E Male Adapter and Hose 40mm
F000016	Camlock Type E Male Adapter and Hose 80mm
F000057	Camlock Type A Male Adapter x Female 80mm S/S
F000130	Camlock Type A Male Adapter x Female 80MM SS
F000036	Camlock Type E Male Adapter and Hose 40mm SS
F000037	Camlock Type E Male Adapter and Hose 80mm SS
F000027	Camlock Type E Male Adapter and Hose 100mm
F000026	Camlock Type F Male x Male Adapter 80mm
F000127	Camlock Type F Male x Male Adapter 80mm SS
F000138	Male Adapter 110X100mm
F000044	Vitaulic Flange Adapter 150mm
F000043	Flanged Adapter Comp 110 x 100mm

Nominal Pipe Size (NPS)	Outside Diameter (OD) (inches)	Length (L) (inches)	Weight (lbs)
1/8	0.405	1.00	0.04
1/4	0.540	1.13	0.06
3/8	0.675	1.25	0.09
1/2	0.840	1.38	0.15
3/4	1.050	1.50	0.25
1	1.315	1.75	0.40
1 1/4	1.660	2.00	0.70
1 1/2	1.900	2.25	1.00
2	2.375	2.50	1.80
2 1/2	2.875	2.75	2.80
3	3.500	3.00	4.00
3 1/2	4.000	3.50	5.80
4	4.500	3.75	8.00
5	5.563	4.25	13.50
6	6.625	4.75	20.00
8	8.625	5.50	35.00
10	10.750	6.00	55.00
12	12.750	6.50	80.00

Disclaimer: Actual sizes, pressure ratings, dimensions, and weights may vary depending on specific models and project requirements.

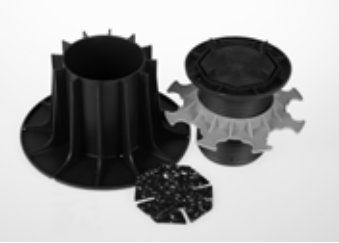




Pipe Fittings



End Caps



Description

Protective covers or closures used to seal the ends of pipes, tubes, or other cylindrical objects. Made from materials such as plastic, metal, or rubber, Based on durability, chemical resistance, and temperature tolerance.

Code

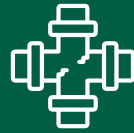
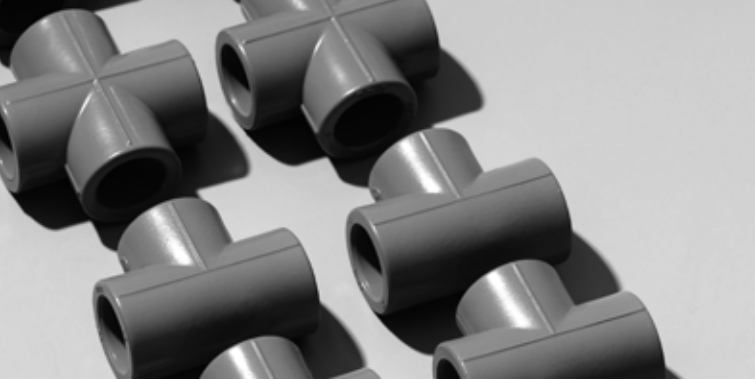
Product Details

F000014	Camlock Type DC Female End Cap 40mm
F000066	20mm Bosal PVC End Caps

Nominal Pipe Size (NPS)	Outside Diameter (OD) (inches)	Length (L) (inches)	Weight (lbs)
1/8	0.405	0.75	0.02
1/4	0.540	0.75	0.03
3/8	0.675	0.75	0.04
1/2	0.840	0.75	0.05
3/4	1.050	0.75	0.07
1	1.315	0.75	0.09
1 1/4	1.660	0.75	0.15
1 1/2	1.900	0.75	0.20
2	2.375	0.75	0.30
2 1/2	2.875	1.00	0.50
3	3.500	1.00	0.75
3 1/2	4.000	1.00	1.00
4	4.500	1.00	1.25
5	5.563	1.00	2.00
6	6.625	1.00	3.00
8	8.625	1.50	5.00
10	10.750	1.50	7.00
12	12.750	2.00	10.00

Disclaimer: Actual sizes, pressure ratings, dimensions, and weights may vary depending on specific models and project requirements.





Pipe Fittings

Union



Description

Connects two pipes allowing for easy disconnection and reconnection. Three main parts: a male end, a female end, and a nut. This design enables quick assembly and disassembly of piping systems for maintenance, repair, or modification purposes.

Code

F000024

Product Details

25mm Galvanized Union

Nominal Pipe Size (NPS)	Outside Diameter (OD) (inches)	Length (L) (inches)	Weight (lbs)
1/4	0.540	1.38	0.09
3/8	0.675	1.50	0.13
1/2	0.840	1.63	0.20
3/4	1.050	1.88	0.35
1	1.315	2.13	0.60
1 1/4	1.660	2.38	1.00
1 1/2	1.900	2.63	1.40
2	2.375	2.88	2.20
2 1/2	2.875	3.13	3.50
3	3.500	3.38	5.00
4	4.500	3.88	8.50
5	5.563	4.25	14.00
6	6.625	4.75	20.00
8	8.625	5.75	35.00
10	10.750	6.75	55.00
12	12.750	7.75	80.00

Disclaimer: Actual sizes, pressure ratings, dimensions, and weights may vary depending on specific models and project requirements.

Fittings



Description

Connect, terminate, control, or adapt pipes, tubes, or hoses within fluid handling systems. Come in various shapes, sizes, and materials. Made from metal, plastic, and rubber, to suit different applications.

Code

F000122

1/4 Male Straight 10mm Pneumatic Fitting

F000123

3/8 Male 90 Degree 10mm Pneumatic Fitting

F000330

1/2 INCH Stainless Steel Socket Fitting 1/2

F000087

Upright Pendant Sprinkler Quick Response Chrome Plated



Pipe Fittings



Sockets



Description

Hollow cylindrical fittings used to join pipes or tubes together. These fittings typically have a female threaded opening or a plain end for solvent welding, allowing for secure connections with male-threaded pipes or other fittings. Facilitates the assembly of piping systems by providing stable and leak-resistant joints.

Code

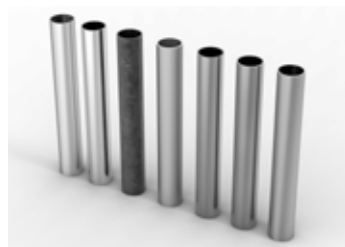
Product Details

F000045	160mm Electrfusion Socket PN10
F000056	50mm Galvanized Socket
F000075	15mm Galvanized Socket
F000072	15mm Galvanized Socket
F000080	20mm Galvanized Socket
F000082	20x15mm Galvanized Red Socket
F000085	25mm Galvanized Socket
F000083	25x20mm Galvanized Red Socket
F000091	32mm Galvanized Socket
F000089	32x25mm Galvanized Red Socket
F000307	50 x 40mm Galvanized Red Socket
F000308	80mm Galvanized Socket

Socket Size (Nominal)	Diameter (inches)	Length (inches)	Weight (lbs)
1/4"	0.375	0.75	0.02
3/8"	0.500	0.88	0.04
1/2"	0.750	1.00	0.08
3/4"	1.000	1.13	0.15
1"	1.250	1.25	0.25
1 1/4"	1.625	1.38	0.40
1 1/2"	1.875	1.50	0.60
2"	2.375	1.75	1.00
2 1/2"	2.875	2.00	1.50
3"	3.500	2.25	2.00
4"	4.500	2.50	3.00
5"	5.563	2.75	5.00
6"	6.625	3.00	7.00
8"	8.625	3.50	11.00
10"	10.750	4.00	18.00
12"	12.750	4.50	26.00

Disclaimer: Actual sizes, pressure ratings, dimensions, and weights may vary depending on specific models and project requirements.

Medium Pipes



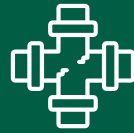
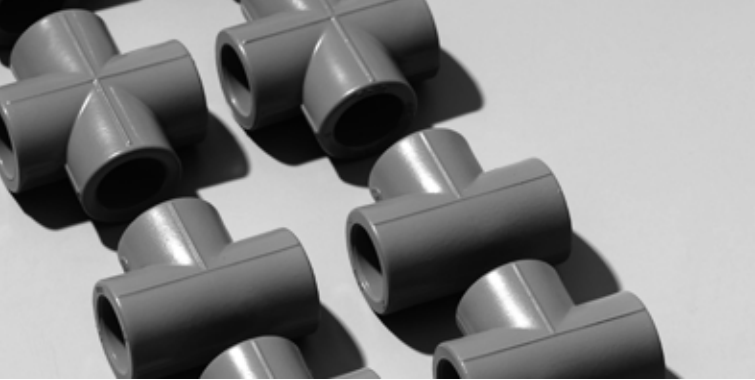
Description

Medium-sized pipes are used for transporting fluids, gases, or other substances within facilities or mining sites. Made from steel, stainless steel, or PVC, making it durable and corrosion resistance.

Code

Product Details

F000095	15mm Galvanized MED Pipe SAB62 SCRD 6m
F000096	20mm Galvanized MED Pipe SAB62 SCRD 6m
F000097	25mm Galvanized MED Pipe SAB62 SCRD 6m
F000098	32mm Galvanized MED Pipe SAB62 SCRD 6m



Pipe Fittings

Spud

Description

Tapered or threaded rod or pin used for various purposes, aligning, securing, or joining components together. Made from durable materials like steel or brass to withstand heavy-duty applications and environmental conditions.

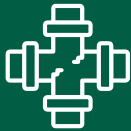
Code

Product Details

F000071	15mm Spud Female
F000055	50mm Spud Female

Spud Size (Nominal)	Diameter (inches)	Length (inches)	Weight (lbs)
1/2"	0.50	1.50	0.05
3/4"	0.75	1.75	0.08
1"	1.00	2.00	0.12
1 1/4"	1.25	2.25	0.20
1 1/2"	1.50	2.50	0.30
2"	2.00	3.00	0.50
2 1/2"	2.50	3.50	0.80
3"	3.00	4.00	1.20
4"	4.00	5.00	2.00
5"	5.00	6.00	3.50
6"	6.00	7.00	5.00
8"	8.00	9.00	9.00
10"	10.00	11.00	15.00
12"	12.00	13.00	22.00

Disclaimer: Actual sizes, pressure ratings, dimensions, and weights may vary depending on specific models and project requirements.



Pipe Fittings



Roller Assembly



Description

Mechanical component comprising multiple rollers mounted on a frame or housing. Used in conveyor systems to support and guide the movement of materials along a specified path. Facilitating smooth and efficient material handling, enhancing productivity, and minimizing downtime.

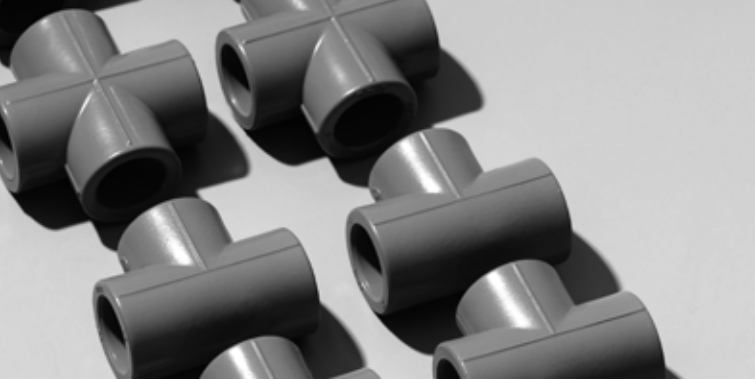
Code

Product Details

F000062	50mm AFX Roller Assembly
F000063	150mm AFX Roller Assembly

Roller Assembly Size (Nominal)	Roller Diameter (inches)	Roller Length (inches)	Load Capacity (lbs)
1 inch	1	1.5	100
2 inches	2	2	200
3 inches	3	2.5	300
4 inches	4	3	400
5 inches	5	3.5	500
6 inches	6	4	600
8 inches	8	5	800
10 inches	10	6	1000
12 inches	12	7	1200

Disclaimer: Actual sizes, pressure ratings, dimensions, and weights may vary depending on specific models and project requirements.



Pipe Fittings

Tubing



Description

Hollow cylindrical structures made from metal, plastic, or rubber. Used for conveying fluids, gases, or other substances within equipment, machinery, or piping systems. Has various sizes, shapes, and materials, tailored to specific applications.

Code

F000064

Product Details

Sprague Tubing 20mm

Tubing Size (Nominal)	Outer Diameter (inches)	Wall Thickness (inches)	Length (feet)	Max. Load Capacity (lbs)
1/4"	0.25	0.035	10	500
3/8"	0.375	0.049	10	1000
1/2"	0.5	0.065	20	2000
3/4"	0.75	0.065	20	3000
1"	1	0.065	20	5000
1 1/4"	1.25	0.065	20	7000
1 1/2"	1.5	0.065	20	10000
2"	2	0.065	20	15000
2 1/2"	2.5	0.083	20	20000
3"	3	0.083	20	25000
4"	4	0.083	20	35000
5"	5	0.109	20	50000
6"	6	0.109	20	60000
8"	8	0.109	20	80000
10"	10	0.134	20	100000
12"	12	0.134	20	120000

Disclaimer: Actual sizes, pressure ratings, dimensions, and weights may vary depending on specific models and project requirements.

HDPE Accessories



Description

Used to join high-density polyethylene (HDPE) pipes together securely. Features a compression mechanism that creates a tight seal between the pipes without the need for heat fusion or welding. HDPE compressions are commonly used in fluid handling systems.

Code

F000161

Product Details

Elbow Pipe; Adapter 90 Deg HDPE Compression 110mm PN16

F000162

Plug Pipe; End Stop HDPE Compression 110mm PN16

F000163

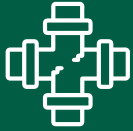
Coupling Pipe; HDPE Compression 160mm PN16

F000164

Adapter Flange To Pipe; HDPE Compression 160mm PN16

F000165

Tee Tube; 90 Deg HDPE Compression 110mm PN16



Pipe Fittings



Angle Iron



Description

Structural steel with an L-shaped cross-section, used for framing, support, or reinforcement. Made from mild steel or stainless steel. Available in various sizes and thicknesses to accommodate different load requirements. Provides structural stability and strength to buildings, equipment, and machinery.

Code

F000068

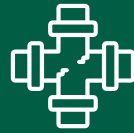
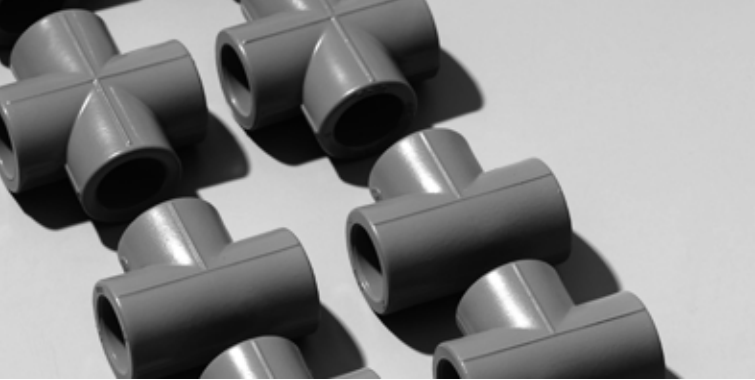
Product Details

25 x 25 x 5mm Angle Iron 6m

Angle Iron Size (Nominal)	Leg A (inches)	Leg B (inches)	Thickness (inches)	Length (feet)	Max. Load Capacity (lbs)
1/2" x 1/2"	0.5	0.5	0.0625	10	500
3/4" x 3/4"	0.75	0.75	0.125	10	1000
1" x 1"	1	1	0.125	20	2000
1 1/4" x 1 1/4"	1.25	1.25	0.125	20	3000
1 1/2" x 1 1/2"	1.5	1.5	0.125	20	4000
2" x 2"	2	2	0.1875	20	6000
2 1/2" x 2 1/2"	2.5	2.5	0.1875	20	8000
3" x 3"	3	3	0.25	20	10000
4" x 4"	4	4	0.25	20	15000
5" x 5"	5	5	0.3125	20	20000
6" x 6"	6	6	0.3125	20	25000
8" x 8"	8	8	0.375	20	35000
10" x 10"	10	10	0.375	20	50000
12" x 12"	12	12	0.375	20	60000

Disclaimer: Actual sizes, pressure ratings, dimensions, and weights may vary depending on specific models and project requirements.





Pipe Fittings

Hollow Plugs



Description

Designed to seal or block the ends of pipes, tubes, or other hollow structures. Features a hollow interior made from materials like metal or plastic. Creates effective seals, preventing the leakage of fluids or gases.

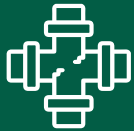
Code

Product Details

F000076	15mm Galvanized Hollow Plug
F000079	20mm Galvanized Hollow Plug
F000086	25mm Galvanized Hollow Plug
F000092	32mm Galvanized Hollow Plug
F000094	50mm Galvanized Hollow Plug

Hollow Plug Size (Nominal)	Outer Diameter (inches)	Inner Diameter (inches)	Length (inches)	Max. Load Capacity (lbs)
1/4"	0.375	0.25	1.5	500
3/8"	0.5	0.375	1.75	1000
1/2"	0.75	0.5	2	1500
3/4"	1	0.75	2.5	2000
1"	1.25	1	3	3000
1 1/4"	1.5	1.25	3.5	4000
1 1/2"	1.75	1.5	4	5000
2"	2	1.75	4.5	6000
2 1/2"	2.5	2.25	5	7000
3"	3	2.75	6	8000
4"	4	3.5	7	10000
5"	5	4.5	8	12000
6"	6	5.5	9	15000
8"	8	7.5	10	20000
10"	10	9.5	12	25000
12"	12	11.5	14	30000

Disclaimer: Actual sizes, pressure ratings, dimensions, and weights may vary depending on specific models and project requirements.



Pipe Fittings



Reducers

Description

Allows for the transition from a larger diameter to a smaller one. Comes in various configurations, including concentric and eccentric reducers, to accommodate different piping systems and flow requirements.

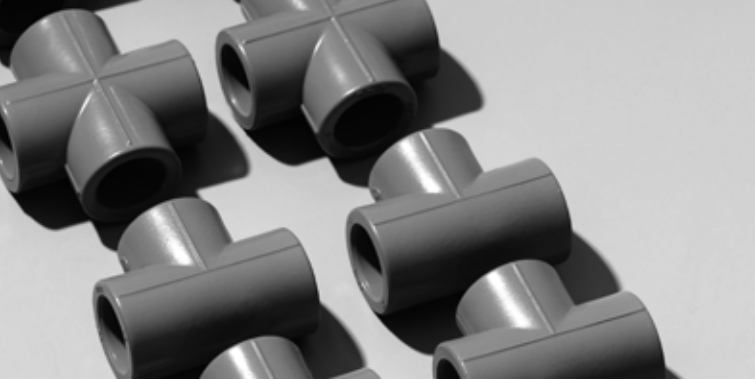
Code

Product Details

F000134	150 X 100mm JIS Concentric Reducer
F000088	25x20mm Galvanized Red Bush

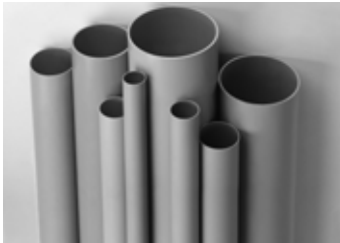
Reducer Size (Nominal)	Outer Diameter (inches)	Inner Diameter (inches)	Length (inches)	Max. Load Capacity (lbs)
1/2"	0.75	0.25	1.5	500
3/4"	1	0.375	1.75	1000
1"	1.25	0.5	2	1500
1 1/4"	1.5	0.75	2.5	2000
1 1/2"	1.75	1	3	2500
2"	2	1.25	3.5	3000
2 1/2"	2.5	1.5	4	3500
3"	3	2	4.5	4000
4"	4	2.5	5	5000
5"	5	3	6	6000
6"	6	4	7	7000
8"	8	5	8	8000
10"	10	6	9	10000
12"	12	7	10	12000
14"	14	8	11	14000
16"	16	9	12	16000

Disclaimer: Actual sizes, pressure ratings, dimensions, and weights may vary depending on specific models and project requirements.



Pipe Fittings

PVC Pipes



Description

Made from polyvinyl chloride, a versatile thermoplastic material. Includes pipes, fittings, valves, and other components used in fluid handling systems, ventilation systems, and construction projects.

Code

F000306

Product Details

50X6mm SV Pipe PVC Pipe

PVC Pipe Size (Nominal)	Outer Diameter (inches)	Wall Thickness (inches)	Length (feet)	Pressure Rating (psi)
1/2"	0.84	0.109	10	600
3/4"	1.05	0.113	10	480
1"	1.315	0.133	10	450
1 1/4"	1.66	0.14	10	370
1 1/2"	1.9	0.145	10	330
2"	2.375	0.154	10	280
2 1/2"	2.875	0.203	10	250
3"	3.5	0.216	10	260
4"	4.5	0.237	10	220
6"	6.625	0.28	10	180
8"	8.625	0.322	10	160
10"	10.75	0.365	10	140
12"	12.75	0.406	10	130

Disclaimer: Actual sizes, pressure ratings, dimensions, and weights may vary depending on specific models and project requirements.





Pipe Fittings



Hoses



Description

Flexible tubes made of rubber, plastic, or other materials used to convey fluids, gases, or granular materials. Comes in various sizes, lengths, and materials. Used in hydraulic systems, pneumatic systems, or material transfer.

Code

F000124

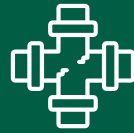
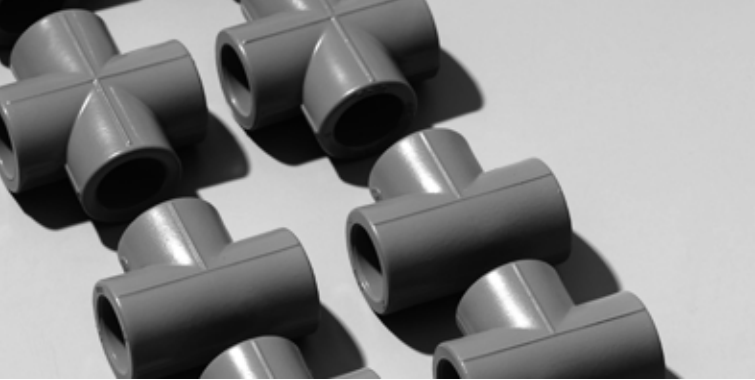
Product Details

Mineflex Layflat Hose 20 Bar 4" 100m

Hose Size (Nominal)	Inner Diameter (Inches)	Outer Diameter (Inches)	Length (feet)	Max. Working Pressure (psi)	Temp. Range (°F)	Material	Application
1/4"	0.25	0.50	25, 50, 100	3000	-40 to 212	Rubber	General Purpose, Air, Water
3/8"	0.375	0.69	25, 50, 100	3000	-40 to 212	Rubber	General Purpose, Air, Water
1/2"	0.50	0.82	25, 50, 100	3000	-40 to 212	Rubber	General Purpose, Air, Water
3/4"	0.75	1.10	25, 50, 100	3000	-40 to 212	Rubber	General Purpose, Air, Water
1"	1.00	1.38	25, 50, 100	3000	-40 to 212	Rubber	General Purpose, Air, Water
1 1/4"	1.25	1.69	25, 50, 100	3000	-40 to 212	Rubber	General Purpose, Air, Water
1 1/2"	1.50	1.97	25, 50, 100	3000	-40 to 212	Rubber	General Purpose, Air, Water
2"	2.00	2.48	25, 50, 100	3000	-40 to 212	Rubber	General Purpose, Air, Water
2 1/2"	2.50	3.07	25, 50, 100	3000	-40 to 212	Rubber	General Purpose, Air, Water
3"	3.00	3.55	25, 50, 100	3000	-40 to 212	Rubber	General Purpose, Air, Water
4"	4.00	4.55	25, 50, 100	3000	-40 to 212	Rubber	General Purpose, Air, Water

Disclaimer: Actual sizes, pressure ratings, dimensions, and weights may vary depending on specific models and project requirements.





Pipe Fittings

Lancing



Description

Process used for cutting or piercing materials, typically metal, using a high-temperature oxygen jet. Involving directing a high-velocity stream of oxygen onto the material's surface, causing rapid oxidation and combustion, which effectively melts or burns through the material.

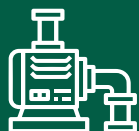
Code

Product Details

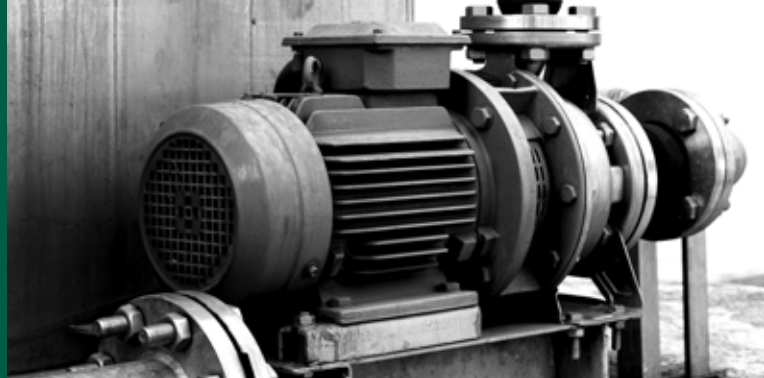
F 0 0 0 1 2 0	12mm X 3m Wire Pack Thermal Lance
F 0 0 0 1 2 1	Lancing Kit Complete

Lancing Equipment	Size (Diameter)	Length (ft)	Material	Max. Working Pressure (psi)	Application
Lance Rod	0.25" - 1.0"	3 - 20	Stainless Steel	Up to 10,000	Descaling, Cleaning, Piercing
Lancing Tube	0.50" - 1.5"	3 - 20	Carbon Steel	Up to 5,000	Oxygen Lancing, Cutting
Lance Pipe	0.75" - 2.0"	3 - 20	Alloy Steel	Up to 15,000	Oxygen Lancing, Piercing
Lancing Bar	0.50" - 1.5"	3 - 10	Copper	Up to 3,000	Thermic Lancing, Cutting
Lancing Needle	0.125" - 0.25"	3 - 10	Tungsten Carbide	Up to 20,000	Precision Piercing, Weld Removal

Disclaimer: Actual sizes, pressure ratings, dimensions, and weights may vary depending on specific models and project requirements.



Pumps



Pumps



Description

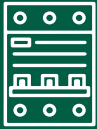
Used to transfer fluids, such as water, chemicals, or slurries, from one location to another. They operate by creating a flow and pressure to move the fluid through a system, often driven by electric motors, engines, or other power sources. Used for water supply, wastewater treatment, dewatering, and material processing.

Code

Product Details

W000010	MAXI Submersible Pump 550V 37KW Complete With 20M Cable
W000011	Fly Submersible Pump 37Kw 525V
W000012	DAB Submersible Pump – Feka VS 750M-A 0,75Kw 220V
W000013	Twin IMP Centrifugal Pump 380V 9.2kW
W000015	Auto Submersible Pump Zilmec V750FC 220V 0,75kW





Electrical Components



Circuit Breakers



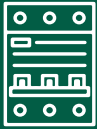
Description

Designed to protect electrical circuits from damage caused by overcurrent or short circuits. They automatically interrupt the flow of electricity when an abnormal condition is detected, preventing electrical fires, equipment damage, and potential hazards to personnel.

Code

Product Details

E 0 0 0 0 1 1	Circuit Breaker S201 C10 ABB
E 0 0 0 0 1 2	Circuit Breaker 100A 1P 6KA C Curve
E 0 0 0 0 2 1	Circuit Breaker NSX100HB1 75kA AC 3P 63A TMD
E 0 0 0 0 2 2	Circuit Breaker NSX100HB1 75KA AC 3P 50A TMD
E 0 0 0 0 3 3	63-100A 36kA 3P TB2 Circuit Breaker
E 0 0 0 0 3 4	4P 80A C 16kA Din MCB 6M Circuit Breaker
E 0 0 0 0 3 5	20-32A 36kA 3P TB2 Circuit Breaker
E 0 0 0 0 3 6	250A 25kA 3P TB2 Lite Circuit Breaker
E 0 0 0 0 3 7	175A 3P Fixed Thermal and Magnetic MCCB 26KA F3
E 0 0 0 0 3 8	25AMP 3P 4,5KA C Curve MCB Circuit Breaker
E 0 0 0 0 3 9	12.5-20A 36kA 3P TB2 Circuit Breaker
E 0 0 0 0 4 0	125A 3P Adj. MCCB 35KA ICS = 100% ICU
E 0 0 0 0 4 1	32AMP 3P 4,5KA C Curve MCB Circuit Breaker
E 0 0 0 0 4 2	100A 4P 6KA C Curve Din MCB 6M Circuit Breaker
E 0 0 0 0 4 3	10AMP 3P 4,5KA C Curve MCB Circuit Breaker
E 0 0 1 6 0	GA0-PLUS-1000-0-0-0 Earth Leakage
E 0 0 0 0 4 4	1P 80A C 16kA Din MCB 1.5M Circuit Breaker
E 0 0 0 0 4 5	3P 125A C 16kA Din MCB 4.5M Circuit Breaker
E 0 0 0 0 4 6	100A 1P 6KA C Curve Din MCB 1.5M Circuit Breaker
E 0 0 0 0 4 7	100A 3P Adj. MCCB 35KA ICS = 100% ICU
E 0 0 0 0 4 8	2P 20A C 15kA Din MCB 2M Circuit Breaker
E 0 0 0 0 4 9	63AMP 1P 4,5KA C Curve Din Miniature Circuit Breaker
E 0 0 0 0 5 0	25AMP 1P 4,5KA C Curve Din Miniature Circuit Breaker
E 0 0 0 0 5 1	10AMP 1P 4,5KA C Curve Din Miniature Circuit Breaker
E 0 0 0 0 5 2	63AMP 4P 4,5KA C Curve Din Miniature Circuit Breaker
E 0 0 0 0 5 3	20AMP 3P 4,5KA C Curve Din Miniature Circuit Breaker
E 0 0 0 0 5 4	63AMP 2P Din Isolator
E 0 0 0 0 5 5	100A 3P 6KA C Curve Din 4.5M Miniature Circuit Breaker
E 0 0 0 0 5 6	16AMP 3P 4,5KA C Curve Din Miniature Circuit Breaker
E 0 0 0 0 5 7	16AMP 1P 4,5KA C Curve Din Miniature Circuit Breaker
E 0 0 0 0 5 8	Auxiliary Contact 1C/O FOR MCBs
E 0 0 0 0 5 9	80A 3P 6KA C Curve Din 4,5M Miniature Circuit Breaker
E 0 0 0 0 6 0	32AMP 1P 4,5KA C Curve Din Miniature Circuit Breaker
E 0 0 0 0 6 1	125A 1P 6KA C Curve Din 1,5M Miniature Circuit Breaker
E 0 0 0 0 6 2	1P 25A C 4.5/6kA Din 1M Miniature Circuit Breaker
E 0 0 0 0 6 3	40AMP 2P 4,5KA C Curve Din Miniature Circuit Breaker
E 0 0 0 0 6 4	2P 6A C 4.5/6kA Din MCB 2M Miniature Circuit Breaker
E 0 0 0 0 6 5	40AMP 3P 4,5KA C Curve Din Miniature Circuit Breaker
E 0 0 0 1 2 0	MCCB T5V400 TMA320-3200 4P FFC 1150VAC/DC
E 0 0 0 1 2 1	Circuit breaker size S2 52A N-Release 741A
E 0 0 0 1 2 2	Circuit breaker size S0 18-25A N-Release 325A
E 0 0 0 2 7 2	2AMP 1P 4,5KA C Curve Din MCB
E 0 0 0 1 2 3	Circuit breaker 250A 200kA 415V 3P
E 0 0 0 1 2 4	Circuit breaker 630A 200kA 415V 3P
E 0 0 0 1 2 8	Shunt Release 90-110V Ac 50/60 Hz Circuit Breaker
E 0 0 0 1 4 9	Circuit Breaker 230V 6KA 1+N-POLE/1MW C10
E 0 0 0 1 3 0	Miniature Circuit Breaker 400V 15kA 2-pole C 6A
E 0 0 0 1 3 1	Miniature Circuit Breaker 400V 15kA 2-pole C 63A
E 0 0 0 2 2 0	Miniature Circuit Breaker 1P 20A C 3KA 230V
E 0 0 0 2 0 2	Circuit Breaker Class 20 A-release 35...45A
E 0 0 0 3 2 6	250A 16kA 3P TB2 Lite Circuit Breaker
E 0 0 0 2 0 3	Circuit Breaker Starter Combination 80A N-Release



Electrical Components



Circuit Breakers



Description

Designed to protect electrical circuits from damage caused by overcurrent or short circuits. They automatically interrupt the flow of electricity when an abnormal condition is detected, preventing electrical fires, equipment damage, and potential hazards to personnel.

Code

Product Details

E000257	Circuit Breaker Compact NSX250HBI 75kA/690VAC 200A 3P
E000269	20-32A 36kA 3P TB2 Circuit Breaker
E000258	Circuit Breaker Compact NSX100HBI 75kA/690VAC 40A 3P
E000226	Circuit Breaker 415V 3-Pole
E000427	Miniature Circuit Breaker 1P 10A C 10kA DIN
E000166	80A 4P 6kA C Curve Din MCB 6M
E000275	4P 40A C 10kA Din MCB 4M
E000437	Circuit Breaker 230V 6kA 1+N-Pole/IMW C2
E000438	Circuit Breaker 230V 6kA 1+N-Pole/IMW C6
E000439	Circuit Breaker 230V 6kA 1+N-Pole/IMW C25
E000441	10AMP 1P 4,5kA C Curve Din MCB
E000324	Motor Circuit Breaker Thermal Magnetic 12-18A
E000286	RCCB 63A 30mA 4 Pole 4MOD Type AC
E000363	Acti9 iID 4P 40A 300mA AC Residual Current Circuit Breaker
E000066	1P 10A C 4.5/6kA Din MCB 1M Miniature Circuit Breaker

ABB Breakers



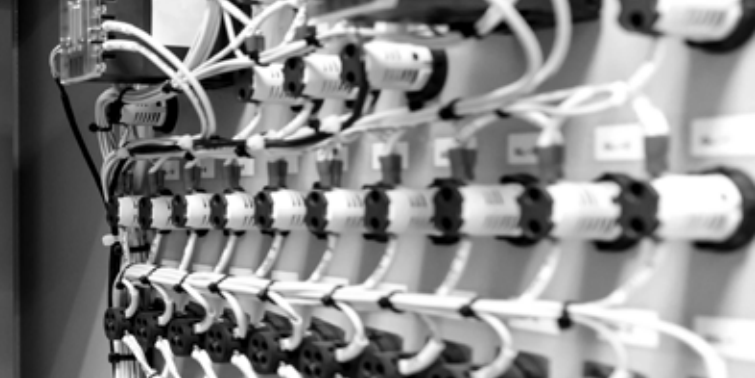
Description

Provides reliable protection for electrical circuits against overcurrent's, short circuits, and other electrical faults.

Code

Product Details

E000108	MCCB T5V 400 TMA 320-3200 3p F FC 1150VAC
E000109	MCCB T5V 400 TMA 400-4000 3p F FC 1150VAC
E000110	MCCB T5V 630 TMA 500-5000 3p F FC 1150VAC
E000111	MCCB T4V 250 TMD 32-320 3p F FC 1150VAC
E000112	MCCB T4V 250 TMA 100-1000 3p F FC 1150VAC
E000480	SOR-C T4-T5-T6 110-127Vac/110-125Vdc Shunt Opening Coil
E000113	MCCB T4V 250 TMA 160-1600 3p F FC 1150VAC
E000114	MCCB T4V 250 TMA 200-2000 3p F FC 1150VAC
E000115	MCCB T4V 250 TMA 250-2500 3p F FC 1150VAC
E000071	Front Terminal 3 Pcs KIT F T4
E000117	MCCB 50kA T7S 1250 PR231/P LS/1 In=1250A 3p F F
E000118	MCCB Extended Rotary Handle RHE T4-T5 F/P Stand
E000147	1250A 66kA 3 Pole 1000VAC Fixed ACB Electronic
E000171	Circuit Breaker NSX100HBI TMD 75KA 690VAC 100A 3P
E000173	Miniature Circuit Breaker 1P 10A C Curve
E000230	MCCB T5V400 TMA400-4000 4P FFC1150VAC/DC
E000231	ACB Auxiliary Contacts
E000337	36kA 3P MCCB XT2N 160 TMA 160-1600 3p F F
E000222	XT2S 160 TMA 160-1600 3P F F
E000238	MCCB TMAX XTIN 160 TMD 160-1600 3P FF
E000478	S201-C16 1P 16A C-Curve 10kA MCB
E000479	S201-C32NA - 1P+N 32A C-Curve 10kA MCB
E000471	T5V400 P 3p FFC 1150VAC MCCB
E000472	KIT F T4 6pcs MCCB Extended Front Terminals
E000491	S200 10kA 1P+N 63A C-Curve
E000399	Breaker 36-52Amp Main ABB T4V250 RS2
E000400	Breaker 56-80Amp Main ABB T4V250 R80
E000401	Breaker 87-125Amp Main ABB T4V250 R125
E000407	Circuit Breaker 6A Single Pole
E000473	SOR-C T4-T5-T6 24...30 Vac/dc MCCB Shunt Ope



Electrical Components

HV Breakers

Description

Designed to interrupt circuits carrying high voltages to protect equipment and personnel from electrical faults. These breakers are typically used in substations, power generation facilities, and heavy industrial environments where high voltage levels are present.

Code

Product Details

E 000315	CTB36 PLUS 33KV 1600A Vacuum Circuit Breaker
E 000316	DSB 24/1600 22KV 1600A Double Side Break Disconnecter
E 000030	Voltage Detector Personal Safety 42KV
E 000317	DSB 36/1600 33KV 1600A Double Side Break Disconnecter

Relays

Description

Controls the flow of electricity within electrical circuits. They operate by opening or closing electrical contacts in response to changes in voltage, current, or other input signals, allowing for the automatic control of machinery, equipment, or processes.

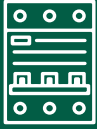
Code

Product Details

E 000013	Pluggable Interface Relays 110V AC, 3 c/o (SPDT), 250V, 10A
E 000014	Pluggable Interface Relays Accessories - Socket for 3 c/o and f
E 000081	Weidmuller Electronic Relay MCZ R
E 000116	ELSEC Adj. EL Relay 110-550VAC No Sense Core
E 000132	2 Change Over Relay Base
E 000133	2 Change Over Relay 115VAC
E 000157	Omron Plug In Power Relay 24VDC Coil 10A
E 000192	Ring ID 150Mm Cbct Ga Relay
E 000196	Fibre Flylead LC-ST UPC MM OM2
E 000158	Omron Plug In Power Relay 110VDC Coil 10A
E 000206	Omron Plug In Power Relay 110V ac Coil 10A Switching Current SPDT
E 000323	3 Phase Supply Control Relay 440VAC 5A
E 000159	Omron Relay Socket Base PYF14A-N
E 000370	Earth Leakage; Type Earth Fault Relay ADIT - E 1 AMP Relay
E 000167	80-93A Thermal Overload Relay
E 000346	Plug-In Relay
E 000347	10A 2CO Mini Plug-In Relay 24VDC
E 000184	8A 2CO 40SER Mini PCB Relay 12VDC
E 000253	10A 3CO 11 PIN Plug-In Relay 24VDC
E 000254	11 PIN Surface / Rail Mount Oval Relay Socket
E 000395	Overload relay 20-80A
E 000187	GA0-1000-0-0-0 Earth Leakage Relay
E 000134	4 Change Over Relay Base

Relay Type	Max. Voltage (V)	Max. Current (A)	Dimensions (mm)	Application
Electromechanical Relay	Up to 1000	Up to 20	Varies	Control Panels, Protection Systems
Solid State Relay	Up to 1000	Up to 100	Varies	Motor Control, Heating Systems, Power Distribution
Thermal Overload Relay	Up to 1000	Up to 100	Varies	Motor Protection, Overload Protection
Protective Relay	Up to 1000	Up to 20	Varies	Power System Protection, Fault Detection

Disclaimer: Actual sizes, pressure ratings, dimensions, and weights may vary depending on specific models and project requirements.



Electrical Components



ABB Relays



Description

Provides precise and reliable control over electrical circuits, offering protection, monitoring, and automation functionalities.

Code

Product Details

E000417	Timer Delay On 110V
E000139	CT-MFD.12 Time Delay Relay 24-240VAC/24-48VDC
E000488	DB45EF - Single Mounting Kit for EF45 Range
E000489	Electronic Overload EF96-100 - 36-100 A
E000490	DB96 - Single Mounting Kit for TF96 Range
E000483	DB200 - Single Mounting Kit for TA200DU Range
E000486	Electronic Overload EF205-210 - 63-210 A
E000484	Thermal Overload TA200DU-90
E000467	CR-U110AC3 Pluggable Interface Relay 110VAC
E000468	CT-TGD.12 Pulse Time Relay 24-240VAC/24-48VDC
E000140	CT-MFE Time Delay Relay 24-240VAC/DC
E000285	63AMP 30mA 2P Din RCD No Overload
E000345	Pluggable Interface Relay CR-M024DC2L

MSR Pilot Relays

Description

Used to monitor and control electrical systems, particularly in medium voltage applications. Designed to detect abnormalities, such as overcurrent or voltage imbalances, and initiate appropriate responses to safeguard equipment and personnel.

Code

Product Details

E000492	MSR8 Relay
E000493	MSR8 Connection Leads
E000494	MSR 2 Wire Module (Blue)
E000495	MSR9 / GBP Complete Wire Harness
E000496	MSR9 110V Pilot Relay

MSR Pilot Relay Model	Max. Voltage (v)	Max. Current (A)	Dimensions (mm)	Application
MSR-3	Up to 600	Up to 10	45 x 35 x 30	Motor Starting, Control Panels
MSR-6	Up to 1000	Up to 20	60 x 45 x 40	Motor Starting, Control Panels
MSR-12	Up to 1000	Up to 30	80 x 60 x 50	Motor Starting, Control Panels
MSR-25	Up to 1200	Up to 40	100 x 80 x 60	Motor Starting, Control Panels

Disclaimer: Actual sizes, pressure ratings, dimensions, and weights may vary depending on specific models and project requirements.

Contactors

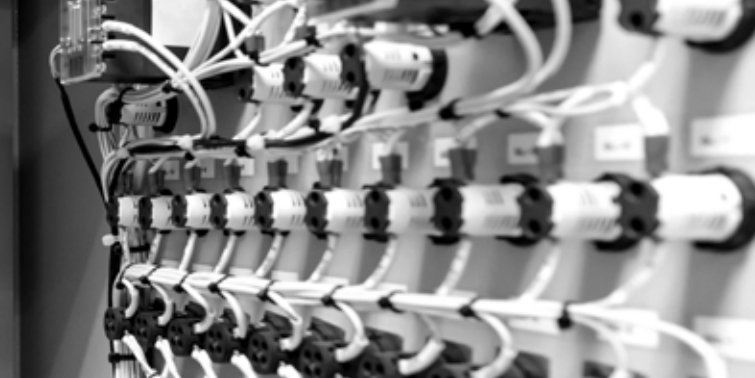
Description

Controls the flow of electricity to motors, pumps, or other electrical loads. They consist of electromechanical switches capable of handling high currents and voltages

Code

Product Details

E000190	Auxiliary Switch 1NO+1NC For MCB
E000191	Contactors 500A 250KW 400VAC
E000163	Contactors 75KW 400VAC
E000268	11kW 400V 25A 3P Contactors 1NO 240VAC Coil
E000165	4kW 400V 9A 3P Contactors 1NC 110VAC Coil
E000284	3P Contactors 9A 4KW 1NO 1NC 110VAC Coil
E000354	AF305-30-00-13 Contactors AC-3 305A, AC-1 500A, 100-250V AC/DC Coil
E000353	3P Contactors 95A AC3 45KW 1NO 1NC 110VAC Coil
E000007	Contactors: 100-250V 50/60Hz AF116..AF370 range - AC-3 305A, AC-1 500A



Electrical Components

Max. Voltage (v)	Max. Current (A)	Application
Up to 690	Up to 9	Motor Control, Lighting Control
Up to 690	Up to 12	Motor Control, Lighting Control
Up to 690	Up to 18	Motor Control, Lighting Control
Up to 690	Up to 25	Motor Control, Lighting Control
Up to 690	Up to 32	Motor Control, Lighting Control
Up to 690	Up to 40	Motor Control, Lighting Control
Up to 690	Up to 50	Motor Control, Lighting Control
Up to 690	Up to 65	Motor Control, Lighting Control
Up to 690	Up to 80	Motor Control, Lighting Control
Up to 690	Up to 95	Motor Control, Lighting Control
Up to 690	Up to 115	Motor Control, Lighting Control
Up to 690	Up to 150	Motor Control, Lighting Control
Up to 690	Up to 170	Motor Control, Lighting Control
Up to 690	Up to 200	Motor Control, Lighting Control

Disclaimer: Actual sizes, pressure ratings, dimensions, and weights may vary depending on specific models and project requirements.

ABB Contactors



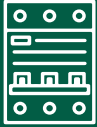
Description

ABB Contactors are designed to provide reliable and efficient control over electrical circuits, particularly for switching high currents and voltages to motors, pumps, or other industrial equipment.

Code

Product Details

E000019	Contactors 80Amp AF80-30-00-13 80A
E000027	Capacitive High Voltage Detector (Contact)
E000119	Non Reversing Contactor AF10KW 350A100-250VAC
E000137	10 Open/Closed Auxiliary Contacts
E000481	MCCB Auxiliary Contacts + Trip Signaling
E000426	AF190-30-00-14 Contactor, 250-500V AC/DC Coil
E000402	Contactors 146Amp AF 146-30-00-10 146A
E000403	Contactors 190Amp AF190-30-00-13 190A
E000351	3P Contactor AC-3 205A, AC-1 350A 250-500V AC/DC Coil
E000352	1NO 1NC Auxiliary, Side-Mounted
E000338	MSI32-1.0 Manual Motor Starter 0,63-1A
E000339	MSI32-1.6 Manual Motor Starter 1 - 1,6 A
E000340	MSI32-4.0 Manual Motor Starter 2,5 - 4 A
E000341	3P 690V Contactor AF52-30-00-13
E000342	3P 690V Contactor AF26-30-00-13
E000343	3P 690V Contactor AF09-30-10-13
E000348	Manual Motor Starter 0.1-0.16A MSI32-0.16
E000349	Manual Motor Starter 0.16-0.25A MSI32-0.25
E000355	ZAF370-13 Coil Replacement Kit
E000356	ZAF205-14 Coil Replacement Kit
E000469	CAL4-11 - 1NO 1NC Auxiliary, Side-mounted for AF09 - AF96
E000487	F40...AF96 range - AC-3 96A, AC-1 130A, 100-250V AC/DC



Electrical Components

Panel Push Buttons, Lights, & Accessories



Description

Used in electrical panels and control stations. Includes push buttons for manual operation, indicator lights for status indication, and additional accessories such as selector switches, emergency stop buttons, and pilot lights.

Code

Product Details

E000443	22mm Panel Mount Red LED Pilot Light 220VAC
E000444	22mm Panel Mount Green LED Pilot Light 220VAC
E000445	22mm Panel Mount Yellow LED Pilot Light 220VAC
E000446	Contact Block Support
E000447	Green Flush Moment Push Button Act
E000448	Red Flush Moment Push Button Act
E000223	Switch Emergency Stop Station Twist Release
E000449	22mm I-O-II Selector Switch
E000450	Mushroom Latching Push Button Twist Release Emergency Stop
E000451	Contact Block - NO
E000141	Two Position Selector Switch
E000235	Limit Switch 1NO + 1NC
E000452	Contact Block - NC
E000453	Mline Sounder and Red Beacon
E000458	KA1-8121 - Legend Plate
E000232	Terminal Block Ground 16MM2
E000459	ML1-100W White Pilot Light
E000460	ML1-100G Green Pilot Light
E000461	ML1-100R Red Pilot Light
E000200	Switch Limit Adj. Rotating Roller Lever
E000462	ML1-100Y Yellow Pilot Light
E000463	ML1-100L Blue Pilot Light
E000464	MLBL-04R Red LED Block 110-130VAC
E000465	MLBL-04G Green LED Block 110-130VAC
E000466	MLBL-04Y Yellow LED Block 110-130VAC
E000236	MLBL-04W White LED Block 110-130VAC
E000237	MLBL-04L Blue LED Block 110-130VAC
E000015	1 N/C Contact Block MCB-01
E000016	1 N/O Contact Block MCB-10
E000017	MCBH-00 Contact Block Holder
E000018	KA1-8120 - Black Legend Plate Holder
E000362	1 N/O+1 N/C Contact Block + Base
E000255	240VAC Siren / Beacon Red 110dB 32TONES IP66
E000256	Banshee Mono S230VAC/DC Siren 1000m 123dB IP65
E000008	Red Chrome Push Button MPI-30R
E000174	Green Push Button MPI-20G
E000175	Red Push Button MPI-20R
E000010	1SFA611523R100t Emergency Stop Button MPET4-10R, Twist Release 40mm
E000009	Green Chrome Push Button MPI-30G
E000372	Earth Leakage; Type Neutral Earthing Resistor Monitor (Nerm)
E000470	CA6-1026 Legend Plate for Emergency Stop
E000262	PITI 2,5-L/TG Installation Level Terminal Block



Electrical Components

Fuse Holders and Fuses



Description

Securely hold fuses in place and provide connections for electrical circuits, while fuses serve as sacrificial elements that interrupt the circuit when excessive current flows to prevent damage.

Code

Product Details

E000020	E9I/32 Fuse Holder - 400V E90 mIP 32A : 10.3 x 38mm Fuses
E000142	Fuse 10x85mm 1500V 10A
E000321	Cartridge Fuse 10X38mm 500VAC 2A
E000322	Fuse Holder 1P 32A For Fuse 10X38mm
E000325	Fuse Holder 4P 32A For Fuse 10X38mm
E000358	4A 10 x 85mm 1500V Fuse
E000359	6.3A 10 x 85mm 1500V Fuse
E000360	10A 10 x 85mm 1500V Fuse
E000405	Fuse Holder 10X85
E000406	3 Pole Fuse Holder 10X38
E000456	1P 32A 1500VDC 10 × 85 mm Fuses

Fuse Holder Model	Fuse Type	Max. Voltage (v)	Max. Current (A)	Dimensions (mm)	Application
FH-100A	Blade Fuse Holder	Up to 32	Up to 100	90 x 40 x 35	Automotive, Industrial
FH-200A	Bolt-Down Fuse Holder	Up to 600	Up to 200	120 x 50 x 40	Industrial, Mining
FH-400A	Bolt-Down Fuse Holder	Up to 1000	Up to 400	150 x 70 x 55	Industrial, Mining
FH-600A	Bolt-Down Fuse Holder	Up to 1500	Up to 600	180 x 80 x 65	Industrial, Mining
HRC-2	HRC Fuse	Up to 690	Up to 2	10 x 38	Industrial, Mining
HRC-4	HRC Fuse	Up to 690	Up to 4	14 x 51	Industrial, Mining
HRC-6	HRC Fuse	Up to 690	Up to 6	22 x 58	Industrial, Mining
HRC-10	HRC Fuse	Up to 690	Up to 10	22 x 58	Industrial, Mining
HRC-16	HRC Fuse	Up to 690	Up to 16	22 x 58	Industrial, Mining
HRC-20	HRC Fuse	Up to 690	Up to 20	27 x 58	Industrial, Mining
HRC-25	HRC Fuse	Up to 690	Up to 25	27 x 58	Industrial, Mining
HRC-32	HRC Fuse	Up to 690	Up to 32	27 x 58	Industrial, Mining
HRC-63	HRC Fuse	Up to 690	Up to 63	40 x 80	Industrial, Mining
HRC-100	HRC Fuse	Up to 690	Up to 100	40 x 80	Industrial, Mining

Disclaimer: Actual sizes, pressure ratings, dimensions, and weights may vary depending on specific models and project requirements.

Current Operated Devices



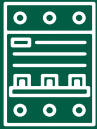
Description

Responds to changes in electrical current levels to initiate specific actions or functions. Includes current relays, current transformers, or other protective devices.

Code

Product Details

E000455	CT4LI85R/4 - 60-185A AC, Current Transformers
E000474	RD3-48 Residual Current Devices 12-48 Vac/Vdc
E000475	TR2 Residual Current Device 60 mm
E000476	TR3 Residual Current Device 80 mm
E000477	Residual Current Devices - FH200
E000482	Residual Current Devices ELR48P
E000485	Residual Current Devices 110mm
E000188	Ring Type I.D. 104Mm Cbct Ga Plus
E000189	72mm 200/1A AC Ammeter
E000273	2-POLE (L+N) 230V 40kA Plug-In Din Surge Arrestor
E000161	Core Electromagnetic Component 1000/1 43mm ID-LT up to 1100V
E000183	Bar 125x93Mm 30Va CII Ct 2500/5A
E000261	CBCT 1000/1 63mm Rectang LT to 1100V GA+
E000404	Core CEMII- Earth Fault Protection Core / Starter Panel
E000260	Neutral Earthing Resistor - 550V 400A FOR 10sec 10A Continuous
E000457	MIM 12 CT Connected Meter



Electrical Components

Power Supply and Switches



Description

Converts incoming electrical energy to the appropriate voltage levels required by equipment and machinery, while switches enable operators to manually control the flow of electricity within the system.

Code

Product Details

E 000031	TRIO Power Supply Din Rail Mounting, Input: 1-phase, Output:12VDC/5A
E 000032	STEP Power Supply Din Rail Mounting, Input: 1-Phase, Output: 12VDC /5
E 000083	Siemens Analogue Output Power Supply 24V DC
E 000085	Siemens Sitop PSU100S Switch Din Rail Power Supply 85
E 000086	Power Supply Sitop PSU100S 24V/5A
E 000087	Power Supply Sitop PSU100S 24V / 10A
E 000143	Power Supply Unit: TRIO-PS-2G/1AC/24DC/10
E 000144	Power Supply Unit: TRIO-PS-2G/1AC/24DC/5
E 000145	Power Supply Unit: TRIO-PS-2G/1AC/24DC/3/C2LPS
E 000146	Power Supply Unit: TRIO-PS/1AC/24DC/10
E 000207	Omron P2RFZ Relay Socket Surface Mount 250VAC
E 000208	Switched-Mode Power Supply 24VDC 10A
E 000422	Limit Switch 2x(1NC+1NO)
E 000423	Limit Switch, Thermoplastic roller lever 1NC + 1NO
E 000259	Drinking Water Float Switch 10M
E 000089	Siemens Ethernet Switch 8 RJ45 Port 24VDC 10 MBIT
E 000090	Siemens Ethernet Switch 6 RJ45 Port 24VDC 100MBIT
E 000098	Scalance XC206-2SFP G Managedable Layer 2IE Switch
E 000103	Pro Soft Switch
E 000126	Auxiliary Switch Transverse 3RV2
E 000127	Auxiliary Switch 250V
E 000274	TS-1 Mercury Type Tilt Switch c/w Cable and Wedge Clamp
E 000104	Siemens PLC Power Supply

Smart Motor Control and Communication Devices



Description

Integrates motor control functionalities with communication capabilities for enhanced automation. Enabling real-time monitoring of motor performance, remote control of motor operations, and communication with other systems or devices.

Code

Product Details

E 000078	UMCPAN-CAB.150 Control Panel Connection
E 000079	UMC 100.3 UC 110-240V AC/DC
E 000080	UMC100-PAN LCD Display and Keypad with USB Interface
E 000319	AI111 Analog Input-Module for UMC100.3
E 000283	NER Monitor & E/F Protection WM HDC HA
E 000240	Simatic S7, Memory Cards For S7-1x 00 CPU
E 000241	Simatic IPC547G (Rack PC, 19", 4HU)
E 000242	Basic Unit Simocode Pro V PN
E 000243	Simatic IPC547J (rack PC, 19, 4 U)
E 000197	Midspan Coupler ST-ST UPC DPX
E 000198	Fibre Flylead ST-ST UPC MM OM2
E 000099	Siemens Communication Module
E 000100	Siemens Serial Board
E 000101	Siemens Digital I/O Module, Simatic ET 200S
E 000102	Siemens Digital I/O Module
E 000091	Siemens Fibre Optic Transceiver SFP Cont 1000MBPS
E 000092	PC-Programmable Universal, 2-wire Transmitter INOR, type IPAQ-C330
E 000093	PC-Programmable Universal, 2-wire Transmitter INOR, type IPAQ-R330
E 000094	Configuration Kit for all Transmitters INOR, type ICON-X
E 000095	Signal conditioner Loop-Powered Isolators
E 000088	Comfort Panel Touch Screen Data Entry TPI200
E 000082	Simatic S7-1500 Analog Input AI 8XU/I/RTD/TC
E 000084	Simatic S7-1500 Analog Output AQ 4XU/I
E 000105	Simatic ET 200SP Base Unit, Push-In Terminals
E 000169	Inductive Proximity Sensor 40x40x17 12-48VDC



Electrical Components

Circuit Breaker Shafts



Description

Allowing personnel to manually trip or reset the breakers as needed. Sirens are warning devices that emit loud sounds to alert workers of potential hazards or emergency situations.

Code

Product Details

E000507	MC/040-802 Rotary Handle
E000454	MCCB Extended Rotary Handle
E000436	Klaxon Nexus 105 Series Surface Mount Electronic Sounder 10-60VDC
E000361	3 Position Spring RTN Long SEL SW Head
E000023	Operating Shaft Assembly 10mm
E000024	Rotary Handle Assembly Small Base
E000162	Lever Type Rotary Operating Mechanism
E000150	Klaxon Nexus Series Red Sounder Beacon 110VAC 230VAC
E000125	Door-Coupling Rotary Operating Mechanism
E000135	Circuit Breaker Handle 340H x 102W X 102D

Model	Type	Max. Voltage (v)	Dimensions (mm)	Application
CB-100A	Shaft	Up to 100	200 x 30 x 30	Industrial, Mining
CB-200A	Shaft	Up to 200	220 x 35 x 35	Industrial, Mining
CB-400A	Shaft	Up to 400	250 x 40 x 40	Industrial, Mining
CB-600A	Shaft	Up to 600	280 x 45 x 45	Industrial, Mining
CB-800A	Shaft	Up to 800	300 x 50 x 50	Industrial, Mining
CB-1000A	Shaft	Up to 1000	320 x 55 x 55	Industrial, Mining
CB-1200A	Shaft	Up to 1200	340 x 60 x 60	Industrial, Mining
CB-1600A	Shaft	Up to 1600	380 x 65 x 65	Industrial, Mining
CB-2000A	Shaft	Up to 2000	400 x 70 x 70	Industrial, Mining
CB-2500A	Shaft	Up to 2500	420 x 75 x 75	Industrial, Mining
CB-3200A	Shaft	Up to 3200	450 x 80 x 80	Industrial, Mining
CB-4000A	Shaft	Up to 4000	480 x 85 x 85	Industrial, Mining
CB-5000A	Shaft	Up to 5000	500 x 90 x 90	Industrial, Mining
CB-6300A	Shaft	Up to 6300	520 x 95 x 95	Industrial, Mining
CB-8000A	Shaft	Up to 8000	550 x 100 x 100	Industrial, Mining
CB-10000A	Shaft	Up to 10000	580 x 105 x 105	Industrial, Mining
CB-12500A	Shaft	Up to 12500	600 x 110 x 110	Industrial, Mining
CB-16000A	Shaft	Up to 16000	620 x 115 x 115	Industrial, Mining
CB-20000A	Shaft	Up to 20000	650 x 120 x 120	Industrial, Mining
CB-25000A	Shaft	Up to 25000	670 x 125 x 125	Industrial, Mining
CB-32000A	Shaft	Up to 32000	700 x 130 x 130	Industrial, Mining
CB-40000A	Shaft	Up to 40000	720 x 135 x 135	Industrial, Mining

Disclaimer: Actual sizes, pressure ratings, dimensions, and weights may vary depending on specific models and project requirements.



Electrical Components



Sirens



Description

Sirens are warning devices that emit loud sounds to alert workers of potential hazards or emergency situations.

Code

Product Details

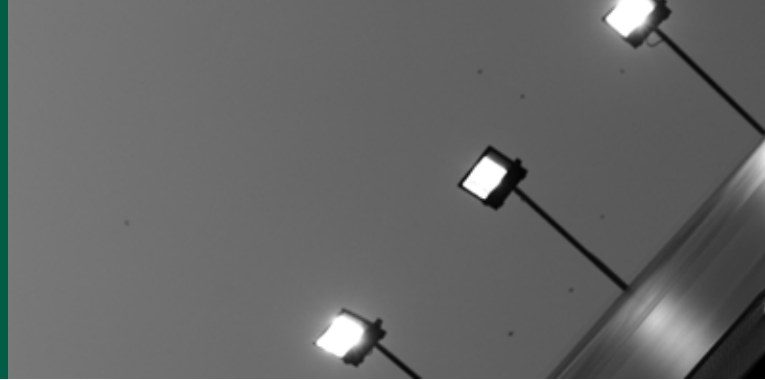
E000428	SirenCO 1500S Siren 1500M 230VAC IP65
E000429	SirenCO 2D Siren 2kM 230VAC IP65

Model	Type	Dimensions (mm)	Application
S-100dB	Siren	150 x 150 x 100	Industrial, Mining
S-110dB	Siren	170 x 170 x 110	Industrial, Mining
S-120dB	Siren	190 x 190 x 120	Industrial, Mining
S-130dB	Siren	210 x 210 x 130	Industrial, Mining
S-140dB	Siren	230 x 230 x 140	Industrial, Mining
S-150dB	Siren	250 x 250 x 150	Industrial, Mining

Disclaimer: Actual sizes, pressure ratings, dimensions, and weights may vary depending on specific models and project requirements.



Lighting



Floodlights



Description

Designed to illuminate large areas with a broad, intense beam of light. These lights are often mounted on poles, structures, or machinery to provide high-intensity illumination for outdoor or indoor spaces.

Code

Product Details

S000018	40W Solar Floodlight
S000014	150W-CW: 85-265VAC 150W Cool White LED Alum Floodlight IP65
S000015	200W-CW: 120-265VAC 200W Cool White LED Alum Floodlight IP65
S000034	180-290VAC 400W LED Daylight (6000k) LED Flood IP65 5Y

Model	Power (w)	Lumen Output	Dimensions (mm)	Application
FL-50W	50	5000	200 x 180 x 50	Industrial, Mining
FL-100W	100	10000	280 x 240 x 60	Industrial, Mining
FL-150W	150	15000	320 x 280 x 70	Industrial, Mining
FL-200W	200	20000		

Disclaimer: Actual sizes, pressure ratings, dimensions, and weights may vary depending on specific models and project requirements.

Fluorescent Lights



Description

Utilizes fluorescent tubes to produce illumination. These lights are known for their energy efficiency and long lifespan compared to traditional incandescent bulbs. Fluorescent lights provide bright, even lighting.

Code

Product Details

S000016	Fluorescent Fitting 2X18W 2FT IP65 22
S000017	26mm T8 Fluorescent Lamp 36W 4FT Daylight 865 Phillips
S000021	26mm T8 Fluorescent Lamp 58W 5FT - Cool White(4000K)
E000244	5FT Complete Fitting - I6A PC 6000K

Model	Power (w)	Lumen Output	Dimensions (mm)	Application
FL-20W	20	1800	600 x 50 x 50	Industrial, Mining
FL-40W	40	3600	1200 x 50 x 50	Industrial, Mining
FL-60W	60	5400	1500 x 50 x 50	Industrial, Mining
FL-80W	80	7200	2400 x 50 x 50	Industrial, Mining
FL-100W	100	9000	3000 x 50 x 50	Industrial, Mining

Disclaimer: Actual sizes, pressure ratings, dimensions, and weights may vary depending on specific models and project requirements.



Lighting



LED Lights



Description

Utilizes light-emitting diodes (LEDs) to produce illumination. These lights are highly energy-efficient, durable, and long-lasting. LED lights offer bright and focused illumination.

Code

Product Details

S000022	24VDC 18W Cool White Frosted 1200mm (4FT) LED T8 Tube
S000024	2X18W LED Fitting 4FT IP65 Tubes Not Included

Model	Power (w)	Lumen Output	Dimensions (mm)	Application
LED-20W	20	2000	300 x 300 x 50	Industrial, Mining
LED-40W	40	4000	600 x 600 x 50	Industrial, Mining
LED-60W	60	6000	900 x 600 x 50	Industrial, Mining
LED-80W	80	8000	1200 x 600 x 50	Industrial, Mining
LED-100W	100	10000	1200 x 900 x 50	Industrial, Mining

Disclaimer: Actual sizes, pressure ratings, dimensions, and weights may vary depending on specific models and project requirements.

High Bay Lights



Description

Designed specifically for illuminating large indoor spaces with high ceilings. These lights are typically mounted at elevated heights to provide broad and uniform illumination over extensive areas.

Code

Product Details

S000023	100-240VAC 200W 4200K Wide Angle High Power LED Highbay
S000027	100-277VAC 400W 5500K, 80° High Power LED Highbay
S000029	100W LED Highbay
S000028	120W LED Highbay
S000026	200W LED Highbay

Model	Power (w)	Lumen Output	Application
HB-100W	100	10000	Industrial, Mining
HB-150W	150	15000	Industrial, Mining
HB-200W	200	20000	Industrial, Mining
HB-250W	250	25000	Industrial, Mining
HB-300W	300	30000	Industrial, Mining

Disclaimer: Actual sizes, pressure ratings, dimensions, and weights may vary depending on specific models and project requirements.



Lighting

Daylights



Description

Utilizes natural sunlight to illuminate indoor spaces. Reducing the reliance on artificial lighting sources during daylight hours. Contributes to energy savings.

Code

Product Details

S000025

230VAC 18W Daylight Frosted 1200mm (4Ft), LED T8 Tube

Model	Power (w)	Lumen Output	Dimensions (mm)	Application
DL-20W	20	1800	600 x 50 x 50	Industrial, Mining
DL-40W	40	3600	1200 x 50 x 50	Industrial, Mining
DL-60W	60	5400	1500 x 50 x 50	Industrial, Mining
DL-80W	80	7200	2400 x 50 x 50	Industrial, Mining
DL-100W	100	9000	3000 x 50 x 50	Industrial, Mining

Disclaimer: Actual sizes, pressure ratings, dimensions, and weights may vary depending on specific models and project requirements.

Traffic Lights



Description

Controls the movement of vehicles, equipment, or personnel within designated areas. These lights typically feature red, yellow, and green signals to indicate stop, caution, and go, respectively.

Code

Product Details

E000227

86-265VAC LED Traffic Set C/W Housing

Model	Voltage (v)	Power (w)	Dimensions (mm)	Application
TL-100	220	20	300 x 200 x 100	Industrial, Mining
TL-200	220	40	400 x 300 x 100	Industrial, Mining
TL-300	220	60	500 x 400 x 100	Industrial, Mining
TL-400	220	80	600 x 500 x 100	Industrial, Mining
TL-500	220	100	700 x 600 x 100	Industrial, Mining

Disclaimer: Actual sizes, pressure ratings, dimensions, and weights may vary depending on specific models and project requirements.



Cables



Armoured Cables



Description

Utilizes a protective layer of metal, made of steel or aluminum providing enhanced durability and resistance to mechanical damage, moisture, and environmental hazards.

Code

Product Details

C000001	Cable Electrical Armored SWA Stripe 4 Core 4mm² Blue stripe
C000002	Cable Electrical Armored SWA Stripe 4 Core 4mm² Red stripe
C000097	Cable Electrical Armored SWA Stripe WH 4 Core 4MM²
C000098	Cable Electrical Armored SWA Stripe WH 4 Core 25MM²
C000099	Cable Electrical Armored SWA Stripe WH 4 Core 120MM²
C000100	Cable Electrical Armored SWA BL/LN XLPE/PVC 4CX95MM²
C000101	Cable Electrical Armored SWA BL/LN XLPE/PVC 4CX70MM²
C000102	Cable Electrical Armored SWA BL/LN XLPE/PVC 4CX50MM²
C000103	Cable Electrical Armored SWA BL/LN XLPE/PVC 4CX35MM²
C000104	Cable Electrical Armored SWA BL/LN XLPE/PVC 4CX16MM²
C000105	Cable Electrical Armored SWA WH/LN 3CX185MM² XLP/HF11KV

Size (mm²)	Current Capacity (A)	Outer Diameter (mm)	Application
1.5	16	10.2	Industrial, Mining
2.5	20	11.6	Industrial, Mining
4	25	13.4	Industrial, Mining
6	32	15.0	Industrial, Mining
10	40	18.4	Industrial, Mining

Disclaimer: Actual sizes, pressure ratings, dimensions, and weights may vary depending on specific models and project requirements.

Rubber Cable



Description

Insulated and sheathed with rubber or synthetic rubber materials, offering flexibility, durability, and resistance to environmental factors. Used for its flexibility and resilience.

Code

Product Details

C000106	Individually Screened Rubber cable with 4 Pilot Cores 4CX35MM²
C000107	Individually Screened Rubber cable with 4 Pilot Cores 4CX16MM²
C000108	Individually Screened Rubber cable with 4 Pilot Cores 4CX10MM²

Size (mm²)	Current Capacity (A)	Outer Diameter (mm)	Application
1.5	16	7.0	Industrial, Mining
2.5	20	7.6	Industrial, Mining
4	25	9.0	Industrial, Mining
6	32	10.0	Industrial, Mining
10	40	12.0	Industrial, Mining

Disclaimer: Actual sizes, pressure ratings, dimensions, and weights may vary depending on specific models and project requirements.



Cables

Earthed Squared Cable



Description

Designed to provide grounding or earthing capabilities in electrical systems. Features a protective outer sheath and conductive cores, allowing them to safely carry electrical currents while also providing a path for fault currents to dissipate to the ground

Code

Product Details

C000109	Cable Electrical Earth Squared 1C 120MM PVC
C000110	Cable Electrical Sqd WH STRIP 3C 240MM XLPE Copper 6.3/11kV

Size (mm ²)	Current Capacity (A)	Outer Diameter (mm)	Application
1.5	16	6.8	Industrial, Mining
2.5	20	7.4	Industrial, Mining
4	25	8.8	Industrial, Mining
6	32	9.8	Industrial, Mining
10	40	11.6	Industrial, Mining

Disclaimer: Actual sizes, pressure ratings, dimensions, and weights may vary depending on specific models and project requirements.

Fibre Cable



Description

Optical fibers used for transmitting data using light signals. lightweight, flexible, capable of transmitting large amounts of data over long distances with minimal signal loss or interference.

Code

Product Details

C000114	48F SM ADSS G652D - 100m Span
C000115	24F SM ADSS G652D - 100m Span

Size (core)	Diameter (mm)	Weight (kg / Km)	Tensile Strength (N)	Bending Radius (mm)	Application
2	3.0	7.2	600	30	Industrial, Mining
4	3.2	8.5	800	35	Industrial, Mining
6	3.5	9.8	1000	40	Industrial, Mining
8	3.8	11.0	1200	45	Industrial, Mining
12	4.2	13.5	1500	50	Industrial, Mining

Disclaimer: Actual sizes, pressure ratings, dimensions, and weights may vary depending on specific models and project requirements.



Cables



Flex Wire



Description

Designed to withstand bending, twisting, and movement without compromising its integrity or conductivity. Constructed with stranded conductors and flexible insulation materials, allowing for flexibility without breaking or damaging the electrical connection.

Code

Product Details

C000120	1.0mm Red Flex Wire /100m
C000121	1.0mm Black Flex Wire /100m
C000122	1.0mm Blue Flex Wire /100m
C000123	1.0mm Brown Flex Wire /100m
C000124	1.0mm Green/Yellow Flex Wire /100m
C000125	1.0mm Pink Flex Wire /100m
C000126	1.0mm Grey Flex Wire /100m
C000127	1.0mm White Flex Wire /100m
C000128	1.0mm Orange Flex Wire /100m
C000129	1.0mm Yellow Flex Wire /100m
D000055	1.5mm Black Flex Wire / 100m
D000056	1.5mm Red Flex Wire / 100m
D000057	1.5mm Orange Flex Wire / 100m
D000058	1.5mm Yellow Flex Wire / 100m
D000059	1.5mm White Flex Wire / 100m
D000060	1.5mm Pink Flex Wire / 100m
D000061	1.5mm Grey Flex Wire / 100m

Size (AWG)	Diameter (mm)	Max. Current Rating (A)	Resistance (Ohm / Km)	Application
10	2.588	30	1.032	Industrial, Mining
12	2.053	20	1.636	Industrial, Mining
14	1.628	15	2.604	Industrial, Mining
16	1.291	10	4.144	Industrial, Mining
18	1.024	7	6.569	Industrial, Mining

Disclaimer: Actual sizes, pressure ratings, dimensions, and weights may vary depending on specific models and project requirements.

CABTYRE Cables



Description

Features stranded copper conductors insulated with PVC, surrounded by a flexible PVC sheath for durability and flexibility. They are designed to withstand bending, twisting, and movement.

Code

Product Details

C000145	0.5mm x 4 Core Black Cabtyre /100m
C000117	0.5mm x 3 Core Black Cabtyre / 100m
C000133	1.0mm x 3 Core Black Cabtyre / 5m
C000118	1.0mm x 3 Core Black Cabtyre / 100m
C000134	1.5mm x 3 Core Black Cabtyre / 100m
C000131	2.5mm x 3 Core Black Cabtyre /100m
C000132	2.5mm x 3 Core Black Cabtyre / 5m
C000144	2.5mm x 4 Core Black Cabtyre /100m

Size (AWG)	Diameter (mm)	Max. Current Rating (A)	Resistance (Ohm / Km)	Application
14	2.08	15	8.55	Industrial, Mining
16	1.65	10	13.6	Industrial, Mining
18	1.31	7	21.6	Industrial, Mining
20	1.02	5	34.5	Industrial, Mining

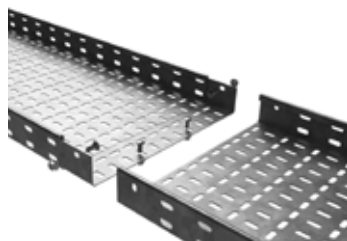
Disclaimer: Actual sizes, pressure ratings, dimensions, and weights may vary depending on specific models and project requirements.



Cable Racking



Cable Racking



Description

Organizes and supports electrical cables in a structured manner. Designed to securely hold cables in place, preventing tangling, damage, or interference with other equipment or machinery.

Code

Product Details

R000004	PSI00 200mm Straight
R000005	PSI50 400mm Straight
R000006	PSI50 600mm Straight
R000007	PSI50 800mm Straight
R000008	DS75 150mm Straight
R000009	DS75 450mm Straight
R000010	DS75 600mm Straight
R000011	PSI00 200mm 90° Horizontal Bend 650R
R000012	PSI50 400mm 90° Horizontal Bend 650R
R000013	PSI50 600mm 90° Horizontal Bend 650R
R000014	PSI50 800mm 90° Horizontal Bend 650R
R000015	DS75 150mm 90° Horizontal Bend 450R
R000016	DS75 450mm 90° Horizontal Bend 450R
R000017	DS75 600mm 90° Horizontal Bend 450R
R000018	PSI00 200mm Tee 650R
R000019	PSI50 400mm Tee 650R
R000020	PSI50 600mm Tee 650R
R000021	DS75 150mm Tee 450R
R000022	DS75 450mm Tee 450R
R000023	DS75 600mm Tee 450R
R000024	PSI00 200mm 90° Internal Bend 650R
R000025	PSI50 400mm 90° Internal Bend 650R
R000026	PSI50 600mm 90° Internal Bend 650R
R000027	PSI50 800mm 90° Internal Bend 650R
R000028	DS75 150mm 90° Internal Bend 450R
R000029	DS75 450mm 90° Internal Bend 450R
R000030	DS75 600mm 90° Internal Bend 450R
R000031	PS 200mm Straight Cover
R000032	PS 400mm Straight Cover
R000033	PS 600mm Straight Cover
R000034	PS 800mm Straight Cover
R000035	200mm Straight Cover
R000036	400mm Straight Cover
R000037	600mm Straight Cover
R000038	PSI00 Divider
R000039	PSI50 Divider
R000040	DS75 Divider
R000041	PSI00 Splice Set c/w Fasteners
R000042	PSI50 Splice Set c/w Fasteners
R000043	DS75 Splice Set c/w Dowels
R000045	PS75 150mm Straight
R000046	PSI50 300mm Straight
R000047	DS75 300mm Straight
R000048	200mm OL254 Cantilever Arm
R000049	250mm OL254 Cantilever Arm
R000050	350mm OL254 Cantilever Arm
R000051	450mm OL254 Cantilever Arm
R000052	650mm OL254 Cantilever Arm
R000053	850mm / 300mm OL254 Cantilever Arm
R000054	PSI50 Splice Set c/w Fasteners



Cable Accessories



Cable Ties



Description

Used to bundle and secure cables, wires, hoses, and other objects. They consist of a flexible nylon strap with a serrated surface and a locking mechanism.

Code

Product Details

D000001	Cable Tie Insulok 100X2.5mm Black - Per PKT
D000002	Cable Tie Insulok 148X3.5mm Black - Per PKT
D000003	Cable Tie Insulok 198X4.7mm Black/ 200X4.6mm
D000004	Cable Tie Insulok 305 X 4.7mm Black - (100 Per PKT)
D000005	Cable Tie Insulok 392X 4.7mm Black - Per PKT
D000006	TI20RBK: Cable Tie Insulok 390X7.8 mm Black - Per PKT
D000007	Cable Tie Insulok 278X7.8 mm Black - Per PKT
D000008	Cable Tie Insulok 535X13.2 mm Black - Per PKT
D000154	Cable Tie Insulok 148 x 3.5mm Yellow
D000155	Cable Tie Insulok 148 x 3.5mm Red
D000156	Cable Tie Insulok 148 x 3.5mm Blue
D000078	Cable Tie Insulok 198 x 4.7mm Black
D000079	Insulok Nylon Cable Ties 198L X 4.7W Natural /100
D000080	Insulok Nylon Cable Ties 198L X 4.7W Red /100
D000124	Cable Tie Ball Stainless 316 360 x 4.5mm
D000125	Cable Tie Ball Stainless 316 360 x 8mm
D000140	Cable Tie Ball Stainless Steel 200 X 4.5MM

Size	Length (mm)	Width (mm)	Tensile Strength (N)	Application
Small	100	2.5	80	Light-duty
Medium	150	3.6	120	Medium-duty
Large	200	4.8	175	Heavy-duty
Extra Large	300	7.6	250	Extra heavy-duty

Disclaimer: Actual sizes, pressure ratings, dimensions, and weights may vary depending on specific models and project requirements.

Insulation Tape



Description

Used to insulate electrical wires and components, providing protection against electrical shock and short circuits. Consists of a durable backing material coated with a layer of adhesive.

Code

Product Details

D000044	Yellow Insulation Tape
D000045	White Insulation Tape
D000046	Green Insulation Tape
D000047	Blue Insulation Tape
D000054	Red Insulation Tape
D000072	Black Insulation Tape
D000165	HT3BK Insulation Tape Flame Retardant 19mm x 0.13 10M Black
D000166	HT3WT Insulation Tape Flame Retardant 19mm x 0.13 10M White
D000167	HT3GR Insulation Tape Flame Retardant 19mm x 0.13 10M Green
D000168	HT3RD Insulation Tape Flame Retardant 19mm x 0.13 10M Red
D000169	HT2BL Insulation Tape Flame Retardant 18mm x 0.18mm 20M Blue
D000170	HT2YL Insulation Tape Flame Retardant 18mm x 0.18mm 20M Yellow
D000053	NO23 Rubber Splicing Self Amalgamating Tape

Size (Width x Length)	Thickness (mm)	Material	Color	Application
19mm x 20m	0.13	PVC	Black	General Insulation
25mm x 20m	0.13	PVC	Red	Electrical Marking
50mm x 20m	0.13	PVC	Green	Grounding
75mm x 20m	0.18	PVC	Yellow	High Voltage Insulation

Disclaimer: Actual sizes, pressure ratings, dimensions, and weights may vary depending on specific models and project requirements.



Cable Accessories

Glands



Description

Provides secure and watertight cable entry points into electrical enclosures, junction boxes, or equipment. Consisting of a threaded body and a compression nut, allowing cables to be inserted through a hole and clamped securely to prevent dust and moisture damage.

Code

Product Details

D000009	Cable Gland BWR Rotary Cone No 1
D000010	Cable Gland BWR Rotary Cone No 2
D000011	Cable Gland BWR Rotary Cone No 3
D000012	Cable Gland BWR Rotary Cone No 4
D000013	Cable Gland BWR Rotary Cone No 5
D000014	Cable Gland BWR Rotary Cone No 6
D000015	Cable Gland BWR Rotary Cone No 7
D000022	Cable Gland A2 Compression No 1
D000023	Cable Gland A2 Compression No 2
D000024	Cable Gland A2 Compression No 3
D000025	Cable Gland A2 Compression No 4
D000026	Cable Gland A2 Compression No 5
D000027	Cable Gland A2 Compression No 6
D000064	Size 00 Metal Compression Gland 16MM
D000065	Size 0 Metal Compression Gland 20MM
D000076	Size 2 Metal Compression Gland 25mm (Without Shroud)
D000077	Size 4 Metal Compression Gland 40mm
D000075	Size 2 Metal Gland For Armoured Cable
D000081	Size 3 Metal Gland For Armoured Cable
D000082	Size 4 Metal Gland For Armoured Cable
D000159	Size 5 Metal Gland For Armoured Cable
D000118	CCG POSIFLEX - Compression Gland IP66/67/68 SIZE 1
D000171	Cable Gland BWR Rotary Cone No 0
D000136	CCG POSI GRIP QS - EX Compression Gland IP66/68 Size 0
D000138	CCG EX Corrosion Guard - Armoured Cable Gland Size 0
D000137	CCG POSI Grip QS - EX Compression

Size (Thread)	Cable Diameter Range (mm)	Material	Application
M16	4 - 8	Brass, Stainless Steel	General Purpose
M20	6 - 12	Brass, Nylon	Light to Medium Duty
M25	10 - 14	Brass, Nylon	Medium to Heavy Duty
M32	12 - 20	Brass, Stainless Steel	Heavy Duty

Disclaimer: Actual sizes, pressure ratings, dimensions, and weights may vary depending on specific models and project requirements.

Joint Kits



Description

Used to create watertight or airtight connections, cables, or conduits. Includes sealing materials such as rubber gaskets, epoxy compounds, or heat-shrinkable sleeves, along with fittings and necessary accessories.

Code

Product Details

D000048	9IA1W 4-10mm2 LV Joint Kit
D000049	9IA2W 16-25mm2 LV Joint Kit
D000050	9IA3W 35-50mm2 LV Joint Kit
D000051	9IA4W 70mm2 LV Joint Kit
D000052	9IA5W 16-25mm2 LV Joint Kit
D000067	CMFRJ-4 Flexible Resin Joint 25-35MM2



Cable Accessories



Size (mm)	Capacity (Amps)	Material	Application
16	Up to 250	Copper	Low voltage joints
25	Up to 400	Copper	Medium voltage joints
35	Up to 630	Copper	High voltage joints
50	Up to 1000	Copper	Extra high voltage joints

Disclaimer: Actual sizes, pressure ratings, dimensions, and weights may vary depending on specific models and project requirements.

Ferrules



Description

Utilizes metal or plastic sleeves to terminate or reinforce the end of a wire, cable, or rope. These sleeves are crimped or swaged onto the wire or cable to providing strength, support, and protection against fraying or damage.

Code

Product Details

D000066	Ferrule XLPE 240mm
D000158	Non Insulated Ferrules 2.5mm /100
D000069	Non Insulated Ferrules 4mm /10
D000070	Non Insulated Ferrules 16mm /100
D000073	Non Insulated Ferrules 25mm /10
D000074	Non Insulated Ferrules 35mm /10
D000160	Non Insulated Ferrules 185mm /5
D000093	E1010RD: Bootlace Ferrule Red 1.0MM
D000094	E1510BK: Bootlace Ferrule Black 1.0MM
D000095	E2512GY: Bootlace Ferrule Grey 1.0MM
D000163	1MM Red Starfix Ferrule / 1000

Size (mm)	Capacity (Amps)	Material	Application
1.0	Up to 20	Copper	Small wire terminations
1.5	Up to 30	Copper	Small to medium wire terminations
2.5	Up to 40	Copper	Medium wire terminations
4.0	Up to 60	Copper	Medium to large wire terminations

Disclaimer: Actual sizes, pressure ratings, dimensions, and weights may vary depending on specific models and project requirements.

Lugs



Description

Uses metal connectors to terminate electrical cables or wires to electrical equipment or terminals. Feature a hole or crimping mechanism for secure attachment to the cable and a stud or bolt hole.

Code

Product Details

D000062	Non Insulated Ring Lug 2.5 x 6mm /10
D000063	Non Insulated Ring Lug 12mm /10
D000083	Non Insulated Ring Lug 25 x 10mm /100
D000122	Kit For Insulated Lugs
D000161	Non Insulated Ring Lug 120x12mm / 2
D000121	Non Insulated Ring Lug 50 x 12mm /1
D000162	Non Insulated Lug 120x16mm / 2
D000119	Aluminium Compression Lugs 95MM X 10MM

Size (mm ²)	Capacity (Amps)	Material	Stud Size (mm)	Dimensions (mm)
1.5	Up to 20	Copper	M5	12.5 x 6 x 3
2.5	Up to 30	Copper	M5	14 x 7 x 3.5
4	Up to 50	Copper	M6	16 x 8 x 4
6	Up to 70	Copper	M6	20 x 10 x 5
10	Up to 100	Copper	M8	24 x 12 x 6

Disclaimer: Actual sizes, pressure ratings, dimensions, and weights may vary depending on specific models and project requirements.



Cable Accessories

MV / HV Joint Kits



Description

Used to create secure and insulated connections between medium to high voltage cables. Components consist of cable terminations and insulation materials.

Code

Product Details

D000089	Kit Cable Joint Heatshrink XPLE 150MMX95MM 22 KV
D000090	Kit Cable Joint Heatshrink XPLE 120MMX185MM 22 KV
D000068	50-95mm 22KV XLPE Outdoor Heatshrink Termination Kit

Voltage Rating (kv)	Cable Size (mm ²)	Cable Type	Dimensions (mm)
11	35 - 400	XLPE	300 x 150 x 100
22	95 - 1000	XLPE	450 x 200 x 150
33	185 - 1200	XLPE	600 x 250 x 200
66	400 - 2000	XLPE	800 x 350 x 250
132	800 - 2500	XLPE	1000 x 450 x 300

Disclaimer: Actual sizes, pressure ratings, dimensions, and weights may vary depending on specific models and project requirements.

Plugs / Sockets



Description

Connects electrical equipment or devices to power sources. Consists of prongs or pins that insert into corresponding slots or receptacles in sockets.

Code

Product Details

E000318	Plug 16A 2P+E 230V IP67 6H
E000320	Socket Outlet 2P+E 16A
E000239	16A 3P+N+E 400V 90D Connector IP67 6H
E000281	16A 2P+E 230V Plug IP44 6H
E000282	32A 2P+E 230V Plug IP67 6H
E000293	Surface Socket Outlet 2P+ E With Shutters Pin Earth 16A 250V
E000297	Plug CEE Metal 125A 5P 380V IP67
E000300	Wall Outlet SW CEE Metal 125A5P380V IP67 100A CB

Type	Voltage Rating (v)	Current Rating (A)	Dimensions (mm)
Single Phase	230	Up to 16	80 x 60 x 50
Three Phase	400	Up to 32	100 x 80 x 60
Industrial	400	Up to 63	120 x 100 x 80
High Voltage	1000	Up to 1250	200 x 150 x 100
Mining Grade	1000	Up to 5000	250 x 200 x 150

Disclaimer: Actual sizes, pressure ratings, dimensions, and weights may vary depending on specific models and project requirements.





Instrumentation

Fluke Meters



Description

Utilizes high-quality testing and measurement tools. Includes multimeters, thermal imagers, oscilloscopes, and other diagnostic devices used for troubleshooting, maintenance, and quality control.

Code

Product Details

1000005	Fluke 1587 Insulation Multimeter Tester
1000006	Fluke 376 FC AC/DC with iFlex Clamp Meter
1000007	Fluke 373 Clamp Meter
1000008	Fluke 179 True RMS Digital Multimeter
1000012	Fluke 2AC Volt Alert
1000013	Fluke 117 True RMS Multimeter
1000016	Fluke 177 EGFID TRMS Multimeter W/Backlight
1000019	Fluke SureGrip Leads TLK225
1000020	FLUKE 9040EUR: Phase Rotation Indicator
1000021	Fluke 1630-2 FC: Earth Ground Loop and Leakage Clamp
1000024	Fluke 931 Contact and Non-Contact Dual-Purpose Tachometer
1000025	Fluke 805 FC: Vibration Meter with Fluke Connect
1000026	Fluke 805 ES: External Vibration Sensor
1000027	Fluke 805 FC/805 ES: Vibration Tester Package
1000043	Fluke 789/IR3000FC: Process Meter With IR3000FC Connector
1000044	Fluke 715: VOLT / mA Calibrator
1000045	Fluke 710: mA Loop Valve Tester W/Hart
1000067	Fluke 773: Milliamp Process Clamp Meter
1000098	Fluke Tester 1507 Insulation Lightning Systems
1000104	Fluke 1587 FC Insulation Multimeter
1000105	Fluke 376 TRMS Clamp Meter (iFlex18" Flexi Current Clamp)
1000134	Fluke 1625-2 Kit - Advanced Geo Earth Ground Tester Kit
1000136	Fluke 1503 Insulation Tester
1000137	FLUKE-323 Clamp Meter 400A AC True RMS
1000138	Fluke 1623-2 Kit Basic Geo Earth Ground Tester Kit
1000139	Fluke 1AC II 5PK Volt Alert 5-Pack

Omicron



Description

Comprises of advanced testing and diagnostic equipment. Include relay test sets, power quality analyzers, and insulation testers used for commissioning and maintenance of electrical systems.

Code

Product Details

1000018	Omicron CMC 310 Polarity Tester Hardware (CPOL2)
---------	--

High Voltage Instrumentation



Description

Designed to measure, monitor, and analyze electrical parameters in systems operating at high voltages. Includes voltmeters, ammeters, power analyzers, and oscilloscopes.

Code

Product Details

1000004	15KV High Voltage Insulation Tester
1000135	Fluke 1555 Insulation Resistance Tester (10kV)



Instrumentation

Low and Medium Voltage Instrumentation



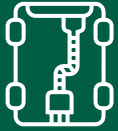
Description

Used for measuring, monitoring, and controlling electrical parameters in systems operating at lower voltage levels. Includes voltmeters, ammeters, power meters, and data loggers designed to handle the voltages.

Code

Product Details

1000009	Thermal Imager
1000017	Sonus PD Pro Kit, Phase Synch System, Function Tester
1000022	Brunton Omni-Slope Inclinator
1000023	Anemometer Weathermate WM20 - Intrinsically Safe
1000031	Krohne Flow Converter
1000032	Belt Rip / Tear, 110VAC/24VDC Power Supply, Sensor
1000033	PT-501 Standard Speed (500PPR) Speed Sensor
1000034	Process Automation Standalone Speed Switch Model SS501/A
1000040	SureGrip Air Probe
1000041	1000 Low Voltage Fault Location System
1000074	4kV EZTHUMP Version 3 Base Easy Thump EZT4V315T3 4 kV Rated Unit
1000075	Non Contact AC Voltage Detector
1000093	Double Limb Whirling Hygrometer With Red Spirit Thermometers & Case
1000130	C25 Soft Meter Case
1000131	CMControl-3 Protection for Existing Unit
1000132	MT310 ELCB/Polarity Tester
1000133	TPC11K Phase Comparator 11kV IEC Spec
1000140	C550 Tool Bag
1000141	FS200-304 Pro Kit
1000142	Microscanner2 Cable Verifier
1000073	3kV Dual Voltage EZTHUMP V3 Base Unit EZT3DV315T3 3DKV Rated Easy



Fastener Range



Bolts



Description

Threaded fasteners used to secure objects together by creating a tight connection between them. Consists of a threaded shaft with a head at one end and a nut at the other.

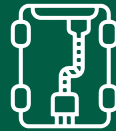
Code

Product Details

G000046	M16 X 80MM 8.8 Hex Bolt
G000307	M10 X 120MM Bolt Assembly Galvanized
G000187	Bolt Galvanized 8.8 Hex 12X80MM and Hex Nut
G000188	Bolt Galvanized 8.8 Hex 12X100MM and Hex Nut
G000194	Bolt Galvanized 8.8 Hex 8X100MM and Hex Nut
G000195	Bolt Galvanized 8.8 Hex 16X120MM and Hex Nut
F000300	Bolt Assembly M16 Flat Washer
F000301	Bolt Assembly M20/100
F000302	Bolt Assembly M24/100
F000303	Bolt Assembly M20/150
F000283	M/S Hex HD Bolts & Nuts M12X80
F000284	M/S Hex HD Bolts & Nuts M12X100 Full Thread
F000285	M/S Hex HD Bolts & Nuts M10X50 Full Thread
F000286	M/S Hex HD Bolts & Nuts M8X50 Full Thread
F000287	M/S Hex HD Bolts & Nuts M6X30
F000274	M/S Hex HD Bolts & Nuts M12X50
F000216	M24/1 Bolt Assembly 24X280MM
F000217	M20/1 Bolt Assembly 20X180MM
F000218	M20/2 Bolt Assembly 20X160MM
F000219	M20/3 Bolt Assembly 20X140MM
F000220	M20/4 Bolt Assembly 20X45MM
F000221	Bolt Assembly M16/100
F000222	M20/31 Bolt Assembly 20X120MM
F000223	M16/2 Bolt Assembly 16X45MM
F000289	HT 8.8 Hex HD Bolts M12X80 C/W M12 Hex Nut
F000290	HT 8.8 Hex HD Bolts M16X120 C/W M16 Hex Nut
F000191	Bolt Galvanized 8.8 24X285MM
F000192	Bolt Galvanized 8.8 Hex 20X180MM
F000193	Bolt Galvanized 8.8 20X160MM
F000194	Bolt Galvanized 8.8 20X140MM
F000195	Bolt Galvanized 8.8 Hex 20X45MM
F000196	Bolt Galvanized 8.8 16X100MM
F000197	Bolt Galvanized 8.8 Hex 20X120MM
F000132	M16 X 80 8.8 Galvanized Bolt Nut and Washer Set
F000046	M16 x 50mm S/S Countersink Bolt
G000192	Commercial Eye Bolt

Bolt Type	Size (Diameter x Length)	Load Capacity (tons)	Dimensions (mm)
Hex Bolt	M6 x 50 mm	0.1	6 x 50
	M8 x 60 mm	0.2	8 x 60
	M10 x 80 mm	0.3	10 x 80
	M12 x 100 mm	0.5	12 x 100
	M16 x 120 mm	0.8	16 x 120

Disclaimer: Actual sizes, pressure ratings, dimensions, and weights may vary depending on specific models and project requirements.



Fastener Range

Nuts



Description

Used with bolts or screws to secure objects together by creating a threaded connection. Features a hexagonal shape with internal threads that match the threads of the corresponding bolt or screw.

Code

Product Details

G000047	M16 Full Nut HT Hex
G000297	M16 Hex HT Nut Galvanized
G000300	M12 Hex HT Nut Galvanized
G000301	M16 Hex HT Nut Galvanized
F000327	M16 Nuts Gr8.8 HDG
F000328	M20 Nuts Gr8.8 HDG
F000323	Nyloc Nuts M12
F000271	HT Hex Nuts 8.8 M10
F000272	HT Hex Nuts 8.8 M16
F000277	Nyloc Nuts M8
F000278	Nyloc Nuts M12
F000279	Nyloc Nuts M10
F000280	HT Hex Nuts 8.8 M12
F000281	HT Hex Nuts 8.8 M16
G000172	HT Nut Galvanized Hex 16MM

Nut Type	Size (Diameter x Length)	Load Capacity (tons)	Dimensions (mm)
Hex Nut	M6 x 10 mm	0.1	6 x 10
	M8 x 12 mm	0.2	8 x 12
	M10 x 15 mm	0.3	10 x 15
	M12 x 18 mm	0.5	12 x 18
	M16 x 24 mm	0.8	16 x 24

Disclaimer: Actual sizes, pressure ratings, dimensions, and weights may vary depending on specific models and project requirements.

Screws



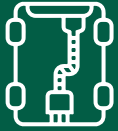
Description

Secures objects together by creating a threaded connection without the need for a separate nut. Features a pointed end for easy insertion into materials and a threaded shaft for gripping and holding objects tightly.

Code

Product Details

G000298	Screw Tex 5.5 X 65MM
G000299	Drywall Screw 3.9 X 30MM
G000302	Screw Nailing Hammer Hex 8X60MM
G000304	Set Screw Galvanized 8.8 HEX 12 X 80MM
G000305	Screw Tek 5.5 X 25MM
G000184	Screw Anchor HUS4-H 10X70MM (Pack Of 50)
G000189	Set Screw Galvanized 8.8 Hex 10X50MM and Hex Nut
G000190	Set Screw Galvanized 8.8 Hex 8X50MM and Hex Nut
G000191	Set Screw Galvanized 8.8 Hex 6X30MM and Hex Nut
G000193	Screw S/TAP PHD 4.2X25 Pozi Comb
G000197	Set Screw Galvanized 8.8 HEX 6X100MM
G000198	Set Screw HTM 10X120MM and Nut Flange 10MM
G000174	Screw Tek 5.5 X 65MM
G000177	Drywall Screw S-DD01B 3,5x25mm (Pack Of 1000)
G000178	Drywall Screw S-DS01B 3,5x25mm
G000179	Set Screw Galvanized 8.8 Hex 10X55MM
G000180	Set Screw Galvanized 8.8 Hex 12X55MM
G000181	Set Screw Galvanized 8.8 Hex 16X55MM
G000182	Set Screw Galvanized 8.8 Hex 20X40MM and Hex Nut
F000251	M6 X 40 GR8.8 Set screw
F000252	M6 X 50 GR8.8 Set screw
F000253	M8 X 40 GR8.8 Set screw
F000254	M8 X 50 GR8.8 Set screw
F000255	M10 X 35 GR8.8 Set screw
F000256	M10 X 40 GR8.8 Set screw



Fastener Range



Screws



Description

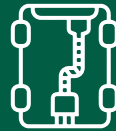
Secures objects together by creating a threaded connection without the need for a separate nut. Features a pointed end for easy insertion into materials and a threaded shaft for gripping and holding objects tightly.

Code

Product Details

F000257	M10 X 50 GR8.8 Set screw
F000258	M12 X 35 GR8.8 Set screw
F000259	M12 X 40 GR8.8 Set screw
F000260	M12 X 50 GR8.8 Set screw
F000261	M14 X 50 GR8.8 Set screw
F000262	M16 X 40 GR8.8 Set screw
F000263	M16 X 50 GR8.8 Set screw
F000276	Screw Chipboard 8 X 25MM
F000288	Screw Self Tapping CSK 8 X 25MM POZI
F000294	HT 8.8 Hex HD Set Screws M6X100
F000295	HT 8.8 Hex HD Set Screws M10X120
F000296	HT 8.8 Hex HD Set Screws M12X120
F000324	8X70 M/S Hexagon Set Screw E/G
F000275	Screw Chipboard Square 8 X 30MM
F000198	Set Screw Galvanized 8.8 HEX 16X45MM
G000173	Handy Bar 1M E/Galvanized 12MM
G000175	Handy Bar 1M E/Galvanized 12MM
G000176	Handy Bar 1M E/Galvanized 16MM
F000325	M16 X 70 Thread Full Gr8.8 CSK NIB 1700-5.2 Galvanized
F000326	M20 X 70 Thread Full Gr8.8 CSK NIB 1700-5.2 Galvanized
F000329	M12 X 70mm Thread Full Gr8.8 NIB 1700-5.2 Galvanized
F000273	M/S Threaded Rods M24X1M
F000297	HT Hex Sets M24X150 8.8
F000224	M24/11 Threaded Rod 24MM X 1M
F000225	M20/11 Threaded Rod 20MM X 1M
F000226	M16/11 Threaded Rod 16MM X 1M





Fastener Range

Washers



Description

Flat, disk-shaped components used with nuts and bolts to distribute the load of the fastener and prevent damage to the surface being fastened. It's a central hole that matches the diameter of the bolt or screw.

Code

Product Details

G000048	M16 Flat Washer
G000049	M20 Flat Washer
G000295	M12 Washer Flat Galvanized
G000296	M16 Washer Flat Galvanized
G000303	M16 Washer Flat Galvanized
G000185	Flat Washer 13X40X3
G000186	Flat Washer 17X40X3
G000196	Washer Nord-Lock ZP 6MM
G000306	Washer Nord-Lock ZP 16MM
G000167	Washer BRT Flat Galvanized 10MM
G000168	Washer BRT Flat Galvanized 12MM
G000169	Washer BRT Flat Galvanized 16MM
G000170	Washer BRT Flat Galvanized 20MM
G000171	Washer BRT Flat Galvanized 24MM
G000148	Washer Copper ASST.110PC
F000264	20MM Flat Washers Pack Of 20
F000269	Flat Washer Z/P M12
F000270	Flat Washer Z/P M16

Washer Type	Size (Diameter x Length)	Load Capacity (tons)	Dimensions (mm)
Flat Washer	M6 x 1.5 mm	0.1	6 x 1.5
	M8 x 2 mm	0.2	8 x 2
	M10 x 2.5 mm	0.3	10 x 2.5
	M12 x 3 mm	0.5	12 x 3
	M16 x 4 mm	0.8	16 x 4

Disclaimer: Actual sizes, pressure ratings, dimensions, and weights may vary depending on specific models and project requirements.



Tools



Screw Drivers



Description

Designed for turning screws to fasten or loosen them. It consists of a handle and a shaft with a tip that matches the shape of the screw head, allowing for precise engagement and application of torque.

Code

Product Details

G000010	Screwdriver Set (5P) 09783
G000012	Screwdriver Set (4P)
G000019	Wera VDE Hexagon, Phillips, Slotted Screwdriver Set 17 Pcs
G000076	Screwdriver PH.#0 X 75mm
G000077	Screwdriver PH.#1 X 75mm
G000078	Screwdriver PH.#2 X 100mm
G000079	Screwdriver PH.#3 X 150mm
G000080	Screwdriver Flat 4 X 100mm
G000081	Screwdriver Flat 3 X 75mm
G000082	Screwdriver Flat 5 X 75mm
G000083	Screwdriver Flat 5.5 X 100mm
G000084	Screwdriver Flat 6 X 100mm
G000085	Screwdriver Flat 6.5 X 150mm
G000086	Screwdriver Flat 8 X 150mm
G000087	Screwdriver Flat 8 X 200mm
G000281	Screwdriver Set 6PC Blister Card
G000343	Screwdriver Set Torx T6-T20 Precision
G000380	Screwdriver Set Hex Shank Heavy Duty 6 Pcs
G000438	Wera Hexagon Slotted Interchangeable Insulated Screwdriver Set 16 Pcs
G000494	Ecoset Screwdriver Set Insulated 1000VAC DIY 7 Pcs
G000495	Screwdriver Set Prevision 8 Pcs
G000477	Screwdriver MTS Set 7 Piece 1000V

Screwdriver Type	Size (Tip)	Length (mm)	Load Capacity (N)
Flathead	3.0 mm	75	100
	4.0 mm	100	150
	5.0 mm	125	200
Phillips	PH1	75	100
	PH2	100	150
	PH3	125	200

Disclaimer: Actual sizes, pressure ratings, dimensions, and weights may vary depending on specific models and project requirements.

Wrenches



Description

Used for gripping, turning, and tightening nuts, bolts, and other fasteners. These tools typically feature a handle and a jaw or socket that fits the profile of the fastener. Including adjustable wrenches, socket wrenches, and open-end wrenches.

Code

Product Details

G000055	Wrench Ratchet Stub 10-19mm
G000056	Wrench Ratchet 8mm
G000057	Wrench Ratchet 9mm
G000058	Wrench Ratchet 10mm
G000059	Wrench Ratchet 11mm
G000060	Wrench Ratchet 12mm
G000061	Wrench Ratchet 13mm
G000062	Wrench Ratchet 14mm
G000063	Wrench Ratchet 15mm
G000064	Wrench Ratchet 16mm
G000065	Wrench Ratchet 17mm
G000066	Wrench Ratchet 18mm
G000067	Wrench Ratchet 19mm
G000068	Wrench Ratchet 21mm
G000069	Wrench Ratchet 22mm
G000070	Wrench Ratchet 24mm



Tools

Wrenches



Description

Used for gripping, turning, and tightening nuts, bolts, and other fasteners. These tools typically feature a handle and a jaw or socket that fits the profile of the fastener. Including adjustable wrenches, socket wrenches, and open-end wrenches.

Code

Product Details

G000071	Wrench Ratchet 27mm
G000072	Wrench Ratchet 30mm
G000073	Wrench Ratchet 32mm
G000123	Wrench Pipe 300mm
G000124	Wrench Pipe 600mm
G000125	Wrench Adjustable 300mm
G000138	1/2" Torque Wrench 30-210NM
G000146	17mmx19mm Ratcheting Podger Wrench
G000147	24mmx27mm Ratcheting Podger Wrench
G000149	Trestle Ratchet 12T-Pair
G000150	Wrench WHL 2 Way 30X32mm
G000159	17x19mm Wrench Spanner Ratchet
G000160	24X30mm Wrench Spanner Ratchet
G000220	Wrench Impact SIW 22TA 3/4" High Torque 450NM / 22V
G000284	Wrench Adjustable 300MM
G000335	Wrench Ratchet Flex 8-19MM 6 Pcs
G000336	Wrench Ratchet 8-17MM 6 Pcs
G000362	Heavy Duty Flexible Socket Wrench Set 8-19MM 12 Pcs
G000367	Wrench Adjustable 250MM
G000368	Wrench Adjustable 450MM
G000369	Wrench Adjustable 150MM
G000381	8 Piece T-Handle Wrench Set
G000384	2DG Torque Wrench 1\2"DR 60-340NM
G000403	14 Piece Metric Ringstop Speed Wrench Set
G000445	3/4" Air Impact Wrench
G000470	Impact Wrench 1"DR X 2033NM Long Anvil
G000471	Impact Wrench 3/4"DR 1085NM
G000472	Impact Wrench 3/4"DR 949NM
G000473	Impact Wrench 1-1/2"DR Long Anvil
G000462	Wera Torque Wrench 2.5 - 25Nm

Wrench Type	Size (mm)	Length (mm)	Max. Capacity (Nm)
Adjustable	150	250	100
	200	300	150
	250	350	200
Combination	6	150	80
	8	200	120
	10	250	160
	12	300	200

Disclaimer: Actual sizes, pressure ratings, dimensions, and weights may vary depending on specific models and project requirements.



Tools



Sockets



Description

Used with wrenches or ratchets to turn nuts, bolts, or other fasteners. These tools typically feature a hollow cylindrical shape with internal grooves or detents that match the profile of the fastener.

Code

Product Details

G000502	Socket Set 3/8"DR With Bits 6-19mm 24 Pcs
G000322	Socket Set 14PC 1"DR 36-80mm 12 Pcs
G000282	Socket Set 16PC 3/4"DR 21-50mm 12 Pcs
G000283	Socket Set 24PC 1/2"DR 8-32mm 12 Pcs
G000221	Impact Socket SI-S 1/2"-36 L
G000216	Plastic / Steel Extension Reel D/B Socket 30M 1.5mm
G000211	10PC 1/2"SQ.DR Impact Socket Set
G000212	12PC 3/4SQ.DR Deep Impact Socket Set
G000151	Socket 1/2"DR Hex Bit 8 x 60mm
G000152	Socket 1/2"DR Hex Bit 10 x 60mm
G000153	Socket 1/2"DR Hex Bit 12 x 60mm
G000154	Socket Set 9PC 1/2"DR HEX SET H3-HI4 60mm
G000155	Socket 1/2"DR Deep Impact x 17mm 6 Pcs
G000156	Socket 1/2"DR Deep Impact x 24mm 6 Pcs
G000157	Socket 1/2"DR Deep Impact x 30mm 6 Pcs
G000143	3/8" SQ.DR 4IPC Socket Set
G000141	1" SQ.Drive Socket Set 13 Pcs
G000120	Spanner Flex Socket 8-19mm 12 Pcs
G000095	Sockets 1/2" Hex 4-14mm 9 Pcs
F000330	Socket Fitting 1/2 Inch Stainless Steel

Socket Type	Size (mm)	Length (mm)	Max. Capacity (Nm)
Standard	6	50	80
	8	50	120
	10	60	160
	12	60	200
Deep	6	75	100
	8	75	140
	10	90	180
	12	90	220

Disclaimer: Actual sizes, pressure ratings, dimensions, and weights may vary depending on specific models and project requirements.

Spanner-Sets



Description

Used for tightening or loosening nuts, bolts, or other fasteners. Features a handle and a fixed or adjustable jaw that fits the profile of the fastener. Comes in open-end spanners, combination spanners, and adjustable spanners.

Code

Product Details

G000020	Mac AFRIC 12 Pcs Combination Spanner Set
G000096	Spanner Combination 10mm
G000097	Spanner Combination 11mm
G000098	Spanner Combination 12mm
G000099	Spanner Combination 13mm
G000100	Spanner Combination 14mm
G000101	Spanner Combination 15mm
G000102	Spanner Combination 16mm
G000103	Spanner Combination 17mm
G000104	Spanner Combination 18mm
G000105	Spanner Combination 19mm
G000106	Spanner Combination 20mm
G000107	Spanner Combination 21mm
G000108	Spanner Combination 22mm
G000109	Spanner Combination 24mm
G000110	Spanner Combination 27mm



Tools

Spanner-Sets



Description

Used for tightening or loosening nuts, bolts, or other fasteners. Features a handle and a fixed or adjustable jaw that fits the profile of the fastener. Comes in open-end spanners, combination spanners, and adjustable spanners.

Code

Product Details

G000111	Spanner Combination 30mm
G000112	Spanner Combination 32mm
G000113	Spanner Combination 55mm
G000114	Spanner Combination 6mm
G000115	Spanner Combination 60mm
G000116	Spanner Combination 7mm
G000117	Spanner Combination 8mm
G000118	Spanner Combination 9mm
G000119	Spanner Stubby 10-19mm
G000144	Spanner Set 26PC Combination 6-32mm
G000204	6 Pcs Flare Nut Spanner Set
G000206	32X36 mm Open End Spanner
G000318	19x24 mm Ring Spanner
G000356	Spanner Podger 17X19MM
G000357	Spanner Podger 19X24MM
G000358	Spanner Podger 24X27MM
G000359	Spanner Podger 24X30MM
G000360	Spanner Podger 32X36MM
G000378	Spanner Set 14 Pcs Combination 8-24MM
G000379	Spanner Flare Nut 11X13MM
G000402	Spanner Combination 36mm
G000404	Spanner Combination 38mm
G000497	Spanner Combination 41mm
G000498	Spanner Combination 46mm
G000499	Spanner Combination 50mm

Spanner Type	Size (mm)	Length (mm)	Max. Capacity (Nm)
Open-end	6	100	100
	8	120	150
	10	150	200
	12	180	250
Combination	6-7	150	120
	8-9	180	200
	10-11	200	250
	12-13	220	300

Disclaimer: Actual sizes, pressure ratings, dimensions, and weights may vary depending on specific models and project requirements.





Tools



Cutting Discs, Drill Bits, and Welding Rod

Description

Utilized for cutting metal, concrete, or other materials, drill bits are used for creating holes in various surfaces. Welding rods, on the other hand, are filler metals used in welding processes to join metals together.

Code

Product Details

G000162	355X4X25.4MM Steel Cutting Disc
G000225	Cutting Disc Metal 230MM X 3.0 X 22.2MM
G000226	Steel Cutting Disc 115MM 50PCS
G000310	Cutting Disc 115MM X 1.0MM ST/S and ST
G000312	Cutting Disc Concrete 115MM
G000441	Wera Driver Bit Set 8 Pcs Hexagon
G000448	Cutting Disc 230MMX3MM
G000399	2.50MM Welding Rod
G000034	Drill Bit Sharp Grin
G000035	Drill Bit Sharpener
G000134	Drill Bit HSS 6MM
G000235	115MM Grinding Disc
G000236	115MM Polishing Disc
G000201	Drill Bit Set (Twist Drills) 25 Pcs 3.5-13
G000321	Stepped Drill Bit M10-M40
G000400	Disc Cutting 115MM X1MM
G000481	2.50MM Ferrolid Welding Rod
G000482	3.15MM Ferrolid Welding Rod

Product	Size / Dimension	Diameter / Length (mm)	Capacity / Thickness (mm)
Cutting Disc	Standard	100 - 400	1.0 - 3.0
	Thickness	-	1.0 - 3.0
Drill Bits	Twist Drill Bits	1.0 - 25.0	-
		(Diameter)	
Welding Rods	Electrode Rods	1.6 - 6.4	-
	(Diameter)		
	Length	300 - 450	-

Disclaimer: Actual sizes, pressure ratings, dimensions, and weights may vary depending on specific models and project requirements.

Pliers and Cutters



Description

Used for gripping, bending, cutting, and shaping various materials. Feature two handles and jaws that can grasp and manipulate objects securely. Cutters have sharp blades for cutting wires, cables, and other materials.

Code

Product Details

G000040	Crescent Water Pump Plier 16/406mm R216C
G000041	Crescent Side Cutter Plier H/D 8/200MM 542-8C
G000121	Pliers Set Mini 5 Pcs
G000205	Grip Pliers Combination 180MM
G000208	Grip Pliers Combination 200MM
G000251	Plier Crescent D/Cutter 542-8Cv/N 200mm
G000280	Pliers Circlip Set 4PC 180mm
G000387	Pliers Side Cutter 200MM
G000388	Pliers Long Nose 200MM
G000390	Pliers Combination 200MM
G000391	Cable Cutting Pliers 200MM VDE 1000V
G000496	Pliers Circlip Set 6PC 180mm & 250mm
G000008	Diagonal Side Cutters (160mm VDE)
G000017	Core Cable Cutter 32.5mm Diameter
G000018	Ratchet Core Cutter 50mm Diameter
G000021	Broach Cutter 18x50mm
G000022	Broach Cutter 24x50mm
G000028	Broach Cutter 26x50mm
G000029	Broach Cutter 22x50mm
G000030	Broach Cutter 28x50mm



Tools

Pliers and Cutters



Description

Used for gripping, bending, cutting, and shaping various materials. Feature two handles and jaws that can grasp and manipulate objects securely. Cutters have sharp blades for cutting wires, cables, and other materials.

Code

Product Details

G000031	Pilot Pins for Broach Cutter 6 34x77mm
G000032	Pilot Pins for Broach Cutter 6 34x103mm
G000037	Broach Cutter 30x50mm HSS
G000392	Cable Cutter Ratcheting Type Capacity Din 325MM
G000393	Ratcheting Cable Cutter

Type	Size (inches)	Length (mm)
Combination	6	150
	8	200
	10	250
	12	300
Side-Cutting Pliers	6	150
	8	200
	10	250
	12	300
Long-Nose Pliers	6	150
	8	200
	10	250
	12	300
Wire Cutters	6	150
	8	200
	10	250
	12	300

Disclaimer: Actual sizes, pressure ratings, dimensions, and weights may vary depending on specific models and project requirements.





Tools



Allen Keys



Description

Drives bolts and screws with hexagonal sockets, known as Allen screws or hex screws. These tools feature a hexagonal-shaped bar with a handle at one end, providing leverage and grip for turning the fastener.

Code

Product Details

G000091	Allen Key Set 1.5-10mm B/P 9PC
G000092	Allen Key Set 0.05"-5/16" B/P 12PC
G000093	Allen Key 2-10MM Ball Point L-Hand 9PC
G000439	Wera 9-Piece Torx Key Set L-Shape, Long Arm
G000440	Wera 9-Piece Hex Key Set L-Shape 1.5-10MM Ball End
G000341	Allen Key Torx T10-T50 L-Handle 9 Pcs
G000493	HUK1 Universal Key
G000500	Allen Key Set 1.5-10mm Long Ball 9 Pcs
G000501	Allen Key Set 5/64-3/4 Extra Long Ball Point 13 Pcs

Size (mm)	Length (mm)
1.5	50
2	60
2.5	70
3	80
4	90
5	100
6	110
8	130
10	150

Disclaimer: Actual sizes, pressure ratings, dimensions, and weights may vary depending on specific models and project requirements.

Crimping and Stripper Tools



Description

Terminate, splice and stripes electrical wires and cables. Crimping features jaws that compress connectors or terminals onto the ends of wires, creating secure electrical connections, stripping tools have blades or notches for removing insulation from wires.

Code

Product Details

G000005	Crimp Tool Uninsulated 1.5 - 16mm
G000009	Battery Operated Crimper K-240KT
G000370	Crimp Tool Hex Aluminium 6-120MM
G000376	Crimp Tool Ratchet Pre-Insulated
G000386	Wire Stripper Crimper 24-10AWG
G000484	Crimp Tool Hex Aluminium 6 - 120mm
G000487	Crimp Tool Hex Aluminium 6 - 50mm
G000486	Crimp Tool Hex Ratchet 6 - 25mm
G000202	Automatic Wire Stripper
G000489	WAK1 Knife & Stripper Utility Retractable

Type	Size (inches)	Capacity (AWG)	Length (mm)
Crimping Pliers	8	10-22	200
	10	10-22	250
	12	10-22	300
	14	10-22	350
	16	10-22	400
Wire Stripper	6	10-22	150
	8	10-22	200
	10	10-22	250
	12	10-22	300
	14	10-22	350



Tools

Aspect	Small Hydraulic Crimper	Medium Hydraulic Crimper	Large Hydraulic Crimper
Size Range	1mm to 10mm diameter	10mm to 25mm diameter	25mm to 50mm diameter
Crimping Force	5 tons to 10 tons	10 tons to 20 tons	20 tons to 50 tons
Length	10 inches to 16 inches	14 inches to 20 inches	18 inches to 24 inches
Width	4 inches to 6 inches	5 inches to 7 inches	6 inches to 8 inches
Height	3 inches to 4 inches	3.5 inches to 5 inches	4 inches to 6 inches
Weight	5 lbs to 10 lbs	8 lbs to 15 lbs	12 lbs to 25 lbs
Jaw Opening	10mm to 20mm	15mm to 30mm	20mm to 40mm
Operating Pressure	700 bar to 800 bar	800 bar to 900 bar	900 bar to 1000 bar
Crimp Die Sets	6mm² to 50mm²	10mm² to 100mm²	20mm² to 240mm²
Hose Length	6 feet to 8 feet	8 feet to 10 feet	10 feet to 12 feet

Aspect	Small Battery-Operated Crimper	Medium Battery-Operated Crimper	Large Battery-Operated Crimper
Size Range	1mm to 10mm diameter	10mm to 25mm diameter	25mm to 50mm diameter
Crimping Force	5 tons to 10 tons	10 tons to 20 tons	20 tons to 50 tons
Length	10 inches to 16 inches	14 inches to 20 inches	18 inches to 24 inches
Width	4 inches to 6 inches	5 inches to 7 inches	6 inches to 8 inches
Height	3 inches to 4 inches	3.5 inches to 5 inches	4 inches to 6 inches
Weight	5 lbs to 10 lbs	8 lbs to 15 lbs	12 lbs to 25 lbs
Jaw Opening	10mm to 20mm	15mm to 30mm	20mm to 40mm
Operating Pressure	N/A	N/A	N/A
Crimp Die Sets	6mm² to 50mm²	10mm² to 100mm²	20mm² to 240mm²
Battery Capacity	12V/18V	18V/24V	24V/36V
Battery Type	Lithium-ion	Lithium-ion	Lithium-ion
Charging Time	1-2 hours	2-3 hours	3-4 hours
Operating Time	100-200 crimps per charge	200-300 crimps per charge	300-400 crimps per charge

Disclaimer: Actual sizes, pressure ratings, dimensions, and weights may vary depending on specific models and project requirements.

Power and Pressure Tools



Description

Performs tasks such as drilling, cutting, grinding, and fastening. These tools include pneumatic drills, electric grinders, hydraulic torque wrenches, and pressure washers, among others.

Code

Product Details

G000145	Cordless Drill 18V 5.0AH Kit
G000219	Cordless Drill Driver SF 8M- A22 Case
G000289	2184337: Cordless Hammer Drill Driver SF
G000308	Cordless Reciprocating Saw
G000309	Cordless Angle Grinder
G000394	Riveter Air 4.8MM KI-4201
G000395	Rivet Gun Hand 2.4-4.8MM
G000130	Heavy Duty Contractors Pop Rivet
G000396	Bosch Electrical Grinder
G000397	Cordless Drill 13MM
G000398	IBM-62H Tool Assortment
G000466	MAKITA Cordless Blower
G000139	Tool Chest 1000x570x480mm Industrial
G000140	Bosch 280MM Angle Grinder
G000200	INGCO Angle Grinder 230MM 2400W
G000383	Bosch Electrical Grinder
G000023	High Pressure Spray Gun
G000342	Drill Machine 13MM Mini 300W
G000126	54V FV Blower Unit
G000228	Blower 34 2R4 3/4 HP Power 2.55KW Airflow 180M/H



Tools



Power and Pressure Tools



Description

Performs tasks such as drilling, cutting, grinding, and fastening. These tools include pneumatic drills, electric grinders, hydraulic torque wrenches, and pressure washers, among others.

Code

Product Details

G000371	M18 Milwaukee Battery Blower
G000045	Hilti Battery Pack B 36/5.2
G000224	Vice Record Drill 414 100Mm

Tool Type	Size (inches)	Pressure Capacity (psi)	Length (mm)	Weight (kg)
Pneumatic Impact Wrench	1/2	90-110	250	2.5
	3/4	90-110	300	3.2
	1	90-110	350	4.0
Pneumatic Drill	3/8	90-110	200	1.8
	1/2	90-110	250	2.2
	3/4	90-110	300	2.8
Hydraulic Jackhammer	N/A	1500-2000	600	25.0
Hydraulic Breaker	N/A	1500-2000	700	30.0

Disclaimer: Actual sizes, pressure ratings, dimensions, and weights may vary depending on specific models and project requirements.

Hydraulic Machines

Description

Powered by hydraulic fluid pressure to perform various mechanical tasks such as lifting, pressing, bending, or cutting. Utilizing hydraulic cylinders, pumps, and motors to convert fluid pressure into linear or rotary motion.

Code

Product Details

G000002	Hydraulic Crimp Tool 16 - 400mm Dies Included
G000003	Hydraulic Crimp Tool Hydraulic Crimp Kit C/W 6 Dies
G000039	Hydraulic Punch Drive Set Pump & Dies Included
G000442	Hydraulic Crimp Tool Hydraulic Crimp Kit C/W 7 Dies
G000443	Hydraulic Cable Cutter 180 Degree Head Rotation
G000444	Hydraulic Punch Driver Set Pump & Dies Included
E000267	Battery 18V 5.0AH Lion
G000488	Punch Set Hydraulic 360 Degrees 20-50mm
G000222	Spray Gun Grav.Feed MVLP

Machine Type	Size (tons)	Dimensions (mm)	Weight (kg)
Hydraulic Press	10	1000 x 800 x 2000	500
	20	1200 x 1000 x 2200	800
Hydraulic Cylinder	5	Ø80 x 500	20
	10	Ø100 x 750	30
Hydraulic Power Unit	5	600 x 400 x 800	100

Disclaimer: Actual sizes, pressure ratings, dimensions, and weights may vary depending on specific models and project requirements.



Tools

Stanley Knife and Hacksaws



Description

Used for cutting, shaping, and drilling various materials. Stanley knives, also known as utility knives, feature retractable blades suitable for cutting materials like cardboard, plastic, and thin metal sheets. Hacksaws are hand saws with fine-toothed blades for cutting through metal pipes, rods, and other objects.

Code

Product Details

G000043	Stanley Fatmax Retractable Folding Knife
G000044	Utility Blade
G000449	Stanley FatMax Safety Knife with Straight Blade, Retractable
G000464	Trimming Knife Blades
G000465	Stanley Knife Folding Utility
G000475	Blade Hacksaw Eclipse Shatterproof 24T
G000476	Kife Stanley Trim Retract Metal
G000377	Trimming Knife 180MM
G000137	Hacksaw 300MM
G000133	Stanley Blades (Pack of 10)
G000446	Hacksaw Professional Moulded Grip
G000447	Hole Saw Tungsten 25mm
G000490	Blades Spare Pack WAK1 / WAK2 Pack of 5
G000491	Hacksaw Tubular 300mm
G000492	Hacksaw Blade 24T Eclipse General Highspeed
G000273	Hole saw Kit Tungsten 8 Pcs
G000274	Hole Saw Tungsten Hole Saw Tungsten 40mm
G000275	Hole Saw Tungsten Hole Saw Tungsten 51mm
G000276	Hole Saw Tungsten Hole Saw Tungsten 64mm
G000277	Holesaw Kit Tungsten Arbors
G000278	Tensioning Tool Stainless Steel MBT Ties

Tool Type	Size (inches)	Pressure Capacity (psi)	Length (mm)
Stanley Knife	9mm	150	0.1
	18mm	180	0.2
Hacksaws	12	300	0.3
	18	350	0.4
	24	400	0.5

Disclaimer: Actual sizes, pressure ratings, dimensions, and weights may vary depending on specific models and project requirements.





Tools



Tool Kits



Description

Includes a variety of tools such as wrenches, screwdrivers, pliers, and sockets, as well as specialized tools relevant to specific tasks or trades. They are indispensable for maintenance, repair, and assembly tasks.

Code

Product Details

I000140	C550 Tool Bag
G000451	Wera 35 Pcs Electricians Tool Kit with Pouch
G000452	5 Pcs Alloy Steel Screw Extractor Set
G000436	MK9SST Tensioning Tool Stainless Steel Ties
G000389	I282-C19-1BMZ-PL-65D Tool Assortment
G000382	Tool Kit 110PC Combination
G000285	King Tony Tool Box Red
G000227	Heavy Duty 7 Draw Tool Trolley
G000042	12 Pcs VDE Tool Set
G000016	Toolkit 167 Piece in ABS Trolley Toolbox
G000011	Fluke Pack 30 Professional Tool Backpack
G000001	32 Pcs Toolkit Backpack Electrician

Tool Kit Type	Size (pieces)	Dimensions (cm)	Weight (kg)
General Tool Kit	50	40 x 30 x 15	10
	100	50 x 40 x 20	15
Electrical Tool Kit	30	35 x 25 x 10	8
	60	45 x 35 x 15	12
Mechanical Tool Kit	40	40 x 30 x 15	9

Disclaimer: Actual sizes, pressure ratings, dimensions, and weights may vary depending on specific models and project requirements.





Valves



Gate Valves



Description

Controls the flow of fluids by opening or closing a gate or wedge-shaped disc. Operated manually using a handwheel or operated remotely via an actuator. Used where a full flow or complete shut-off of fluids is required.

Code

Product Details

V000087	Gate Valve DN 100, PN 10-16
V000088	Gate Valve DN 150, PN 10-16
V000089	Gate Valve DN 250, PN 10-16
V000090	Gate Valve DN 300, PN 10-16
V000099	Gate Valve DN 350, PN 10-16
V000091	Gate Valve DN 400, PN 10-16
V000092	Gate Valve DN 450, PN 10-16

Butterfly Valves



Description

Regulates or isolates the flow of fluids by rotating a disc or vane within the valve body. Operated by a lever, gearbox, or actuator, allowing for precise control over fluid flow rates.

Code

Product Details

V000001	Butterfly Grooved Valve 100mm
V000002	Butterfly Grooved Valve 125mm
V000003	Butterfly Grooved Valve 150mm
V000025	Butterfly Valve 150MM
V000028	Butterfly Valve Wafer 4"100MM 285PSI Hand Lever
V000032	Butterfly Valve Hand Lever 100MM SS304 EPDM ST Iron Wafer PN16
V000033	Butterfly Valve Hand Lever 150MM SS304 EPDM ST Iron Wafer PN16
V000035	Butterfly Valve 150MM With DI Disc
V000036	Butterfly Wafer Valve 6"150MM 285PSI Hand Lever
V000053	Wafer Butterfly Valve 100mm PN16

Check Valves



Description

Designed to allow fluid flow in one direction while preventing reverse flow. Consists of a movable disc or flap that opens to allow forward flow and closes to prevent backflow when the fluid flow direction changes.

Code

Product Details

V000026	Check Valve Wafer 150MM
V000029	Check Valve NRVD-150-76, Non-Return Valve, Wafer, Double Door 150MM
V000030	Check Valve Double Door 100MM Cast Iron Body NBR ST Wafer PN16
V000031	Check Valve Double Door 150MM Cast Iron Body NBR ST Wafer PN16
V000043	DN300 RM Check Valve PN40
V000013	Cast Iron Swing Check Valve 150mm T1000

Knife Gate Valves



Description

Containing solids using a blade to cut through the material. Features a sharp-edged gate that moves up and down to control flow.

Code

Product Details

V000006	Knife Gate Valve Poly-Urethane Lined Handwheel 150NB
V000044	Knife Valve Type DN 80 MM, Unidirectional 316 SS Body, PN16
V000045	Knife Valve Type DN 100MM, Unidirectional 316 SS Body, PN16
V000046	Knife Valve Type DN 150 MM, Material Specification Unidirection
V000047	Knife Valve Type DN 200 MM, Unidirectional 316 SS PN16
V000048	Knife Valve Type DN 250 MM, Unidirectional 316 SS PN16



Valves



Ball Valves

Description

Controls the flow of fluids by rotating a spherical ball with a hole through its center within the valve body. These valves are operated by a handle, lever, or actuator, for quick and reliable opening, or closing of the valve.

Code

Product Details

V000007	Ball Valve 2-Pcs SS316 CLI50 100mm
V000008	Ball Valve Stainless Steel DN15-1.0MPA
V000009	Ball Valve Stainless Steel DN20-1.0MPA
V000010	Ball Valve Stainless Steel DN25-1.0MPA
V000011	Ball Valve Stainless Steel DN32-1.0MPA
V000012	Ball Valve Stainless Steel DN50-1.0MPA
V000049	Ball Valve 12mm Stainless Steel 2 Pcs
V000050	Ball Valve 50mm Stainless Steel 2 Pcs
F000028	Stainless Steel Ball Valve 40mm
F000029	Stainless Steel Ball Valve 15mm
F000030	Stainless Steel Ball Valve 80mm
F000031	Stainless Steel Ball Valve 100mm
V000024	Ball Valve 50MM Stainless Steel 2 Pcs
V000027	Ball Valve Size 50MM Body Material Galvanized
V000037	Ball Valve 20MM S/S 2 Pcs
V000038	Ball Valve 25MM S/S Two Pcs
V000039	Ball Valve 32MM S/S 2 Pcs
V000040	Ball Valve 40mm Stainless Steel 2 Pcs
F000019	2" Blue Hand Ball Valve (1000 WOG)
F000020	2" Green Hand Ball Valve (316)
F000007	Stainless Steel Ball Valve 25mm
F000008	Stainless Steel Ball Valve 50mm
V000022	Brass Ball Valve 80MM
V000023	Brass Ball Valve 50mm PN20
V000034	Brass Ball Valve 25mm PN20
F000077	Brass Ball Valve 15mm
F000081	Brass Ball Valve 20mm
F000025	Brass Ball Valve 32mm PN20
F000042	Brass Ball Valve 15mm

Pressure Valves



Description

Regulates or relieve pressure within a system to maintain safe operating conditions. These valves automatically adjust their opening or closing based on the pressure exerted on them.

Code

Product Details

V000021	Pressure Valve 22MM 400/600KPA
V000041	Pressure Release Valve T80 70K 021-201



Valves

Flange Valve



Description

Flanged ends for easy connection to pipelines or equipment using bolts and gaskets. Features a flange connection that allows for secure sealing and simple installation or removal without the need for welding.

Code

Product Details

V000014	Steel Weld on Flange Table D DN300
V000015	Steel Weld on Flange Table D DN250
V000016	Steel Weld on Flange Table D DN200
V000017	Steel Weld on Flange Table D DN150
V000018	Steel Weld on Flange Table D DN125
V000019	Steel Weld on Flange Table D DN80
V000020	Steel Weld on Flange Table D DN50
V000051	Steel Flange DN150 PN16 - 285od 22 Thick
F000108	Steel Weld on Flange TI600/3 150MM
F000053	Screw on Galvanized Flange Table D 150MM

Other Valves



Description

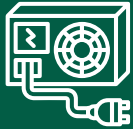
This category includes a variety of specialized valves designed for specific applications, such as diaphragm valves, globe valves, control valves, and solenoid valves, among others.

Code

Product Details

V000004	Diaphragm Valve Rubber 100mm Lined T10
V000005	RSV Valve 664 RHC T25 DN150
V000042	T80 O-Ring Sealing Kit 007-129T80
V000052	Isolation Needle Valve, LI/A 40 Bar
F000023	Angle Regulating Valve DZR 15MM





UPS Systems



UPS Systems



Description

Backup power in the event of electrical grid failures or fluctuations. These systems typically consist of batteries and inverters that seamlessly switch to battery power when mains power is disrupted.

Code

Product Details

X000395	Mecer 650VA / 360W Off-Line UPS
X000408	Cyberex 2400 UPS 18KVA 14,4KW 120 VAC 72A PF 0,7
X000409	Cyberex 2400 UPS 24KVA 19,2KW 100A PF 0,7
X000410	PowerValue 11RT G2 6KVA 100 - 276 VAC 26,1A
X000411	PowerValue 11RT G2 10KVA 100 - 276 VAC 43,5A
X000407	PowerValue 11LI UP 600 to 2000 VA 230 VAC 50/60 HZ

Model	Capacity (kVA)	Sizes (inches)	Weight (lbs)
UPS-500	0.5	17 x 7 x 10	45
UPS-1000	1.0	17 x 7 x 10	55
UPS-2000	2.0	20 x 8 x 12	85
UPS-3000	3.0	20 x 8 x 12	100
UPS-5000	5.0	24 x 10 x 15	150

Disclaimer: Actual sizes, pressure ratings, dimensions, and weights may vary depending on specific models and project requirements.





Personal Protective Equipment



Personal Protective Equipment



Description

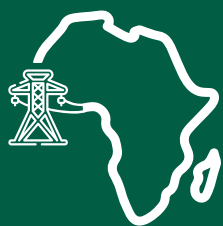
Refers to specialized clothing, gear, and devices designed to protect workers from occupational hazards and injuries. This equipment includes items such as helmets, safety goggles, gloves, respirators, and safety footwear, among others.

Product Details

Coated Knitted Grip Glove
Leather Patch Palm Glove
Pimple Palm Gloves
PVC Elbow Length Glove
Safety Glasses
Reflective Winter Jackets (All Colors)
Reflective Utility Shirts (All Colors)
Safari Shirts (All Colors)
Reflector Vests
Full Body (Leather/Chrome) Welding Apron
Overall Conti Suit (All Colors)
Leather Welding Ankle Spats
Rain Suit (All Colors)
Surface / Underground Overalls
Hard Hats
Ear Plugs
Face Shield
Valve Dust Mask
K95 Face Masks
Welding Helmet
Pvc Gumb Boots
Steel Toe Cap Safety Boots
Cap Lamp Belt
Miners Belt









Managing Direction

A WORD FROM OUR CEO

What drives us as a renowned premier electrical, mechanical, and industrial equipment supplier and engineering firm

Thanks to the reputation we've meticulously developed and the exceptional expertise of our qualified and seasoned personnel, we have successfully secured significant, enduring agreements with three prominent mines: Kamoa, MMG, and Kico, all situated in the DRC.

These accomplishments signify our ongoing expansion into new frontiers. Building on these prosperous partnerships, we've embraced the responsibility of giving back to the community. In just three months, we've generated more than 200 jobs in the local vicinity and beyond, thanks to the mutually beneficial relationships we've cultivated.

Our recent launch of a dedicated showroom tailored to the mining sector further enhances the visibility and ease of conducting business, streamlining processes for both B2B and B2C interactions, ultimately reducing waiting times by enabling real-time stock availability.

Our vision extends beyond the present, as we intend to establish branches in various cities, thereby generating additional employment opportunities. This expansion is fueled by innovative concepts that we believe will positively impact the lives of DRC citizens.

At Purcee Industrial Africa, our aspiration is to emerge as the foremost provider and ultimate source of supply for all your business requirements.



Take the next step

Discover the difference Purcee Industrial Power & Controls can make in your mining operations. Whether you are exploring new ventures, expanding existing operations, or seeking to optimize your current setup, we have the expertise and solutions to support you every step of the way.



Events



KBM Exhibition

Purcee Industrial Power and Controls participation in the 6th KBM exhibition 2025 held in Kolwezi, DRC



Hitachi Event

Our Team recently attended the Hitachi Energy & Transformer Events.



Our amazing team that represented Purcee Industrial Power & Control:
Location: Rome, Italy | **Date:** April 23-24, 2024
Mr. Patrick Kasenda, CEO
Evana Pillay, Supply Chain Manager



Our amazing team that represented Purcee Industrial Power & Control:
Location: Miami, Florida | **Date:** 21st-22nd May 2025
Tracy Miles, General Manager
Evana Pillay-Govender, PA/Marketing HOD

"Bringing together a team of individuals to drive customer satisfaction through effective distribution and innovative engineering of tailored made Purcee Industrial solutions."



DRC Showroom

Tel: +243 993 957 239
Email: sales@purceepower.com
Address: Commune De Manika,
Kolwezi, RVA, 12th Avenue



DRC Head Office

Tel: +243 813 717 559
CEO: +243 861 311 063
Landline: +243 861 341 132
Email: sales@purceepower.com
Address: Kolwezi, Manika, RVA, 7th Ave



South Africa

Tel: +27 11 702 3990
Email: sales@purceepower.com
Address: Unit 22, Coventry Works, 675 Old
Pretoria Rd, Halfway House, Midrand, 1685

